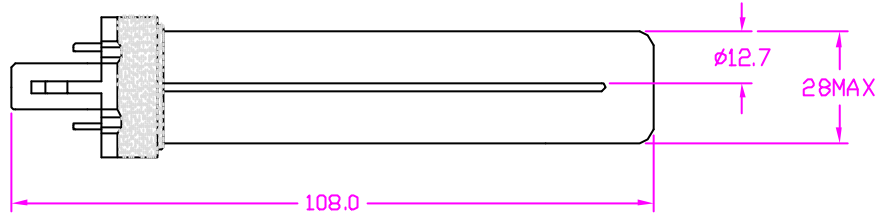
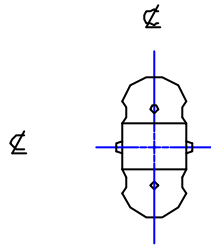


REVISIONS			
REV	DESCRIPTION	DATE	APPROVED



NOTES:

1. ALL DIMENSIONS ARE IN MM UNLESS OTHERWISE SPECIFIED.
2. SEAL TEMP SHOULD BE MAINTAINED BELOW 350°C.
3. THE DIMENSIONS AND SPECIFICATIONS OF PRODUCT LISTED IN THIS SHEET ARE SUBJECT TO CHANGE WITHOUT NOTICE FOR IMPROVEMENT.

CHARACTERISTICS	
VOLTAGE	35 V
WATTAGE	5 W
CURRENT	0.180 A
COLOR TEMP	4100 K
CRI	82
LUMENS	250 Lm
ANSI SHAPE	T-4 SINGLE TUBE
BASE TYPE	CAP TYPE-G23
AVE. LIFE	10,000 HRS
ENVELOPE DIA	12.7
BURN POSITION	ANY

ITEM	QTY	DESCRIPTION	CODE IDENT	PART NUMBER	REMARKS
LIST OF MATERIALS					
UNLESS OTHERWISE SPECIFIED DIMENSIONS ARE IN INCHES DECIMALS .X ± - .XX ± .XXX ± ANGLES ± DRILLED HOLES PER AND 10387 REMOVE BURRS AND SHARP EDGES ALL DIMENSIONS AFTER PLATING		CONTRACT NO.		USHIO AMERICA, INC. 10550 Camden Dr. Cypress, CA 90630 TITLE UFL-CF5S/841 COMPACT FLUORESCENT	
MATERIAL COMPOSITE		APPROVALS			
FINISH		DATE			
		DRAWN R.AMPARO 03/07/01			
		CHKD K.CORDERO 03/07/01		SIZE B	
		ENGR		CODE IDENT NO.	
		MFG		DWG NO. 3000147	
		QUAL		SCALE NONE	
		DSGN ACTVY		WEIGHT	
		GOVT ACTVY		SHEET 1 OF 1	

4

3

1

D

D

C

C

B

B

A

A

4

3

2

1

CAD