

T-SERIES

12VDC 300W DIMMABLE CLASS 2 MULTI OUTPUT LED DRIVER

P/N: T300L12DC

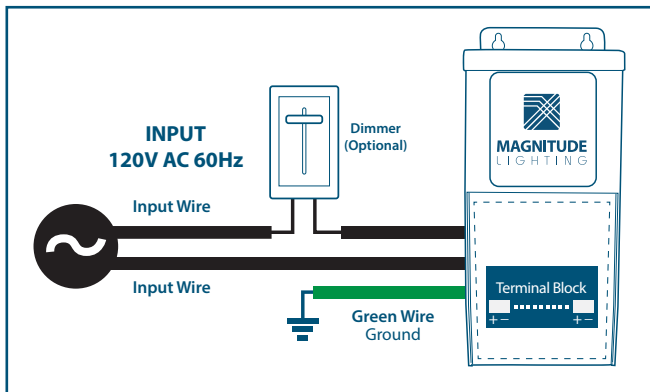


Magnitude's T300L12DC is a multi-output class 2 LED dimmable LED driver. It is equipped with push-to-reset breakers, one on each output, protecting both the load and the driver. Encased in a high-quality NEMA 3R metal case enclosure, that includes 5 knock-outs to enable easy installation. All of our T- Series LED Drivers are dimmable with any standard MLV TRIAC dimmer.

QUICK SPECS

Input Voltage	Max Output Power	Output Voltage	Output Current	Efficiency @ Max Load	Power Factor @ Max. Load	Envir. Protection Rating	Weight
120VAC	60W x 5	12VDC	5 A per port	80%	> 0.93	NEMA 3R	15 lbs

WIRING DIAGRAM



FEATURES

- Class 2
- Dim down to 1%
- Wiring compartment with 5 knock-outs for clean and easy installation.
- Dimmable with any standard MLV TRIAC dimmer
- Push-to-reset circuit breakers
- Commercial and Residential Use
- ETL Listed
- Certified to CSA Standard
- Nema 3R Enclosure

ENCLOSURE DETAILS In. (mm)

Length	11.33 (287.9)
Width	4.73 (120.2)
Height	4.26 (108.2)

T-SERIES

12VDC 300W DIMMABLE CLASS 2 MULTI OUTPUT LED DRIVER

SPECIFICATIONS

Input

Input Voltage	120VAC
Input Current @ Max Load	2.86 A
Power Factor	0.93
Efficiency	80% @Max Load

Output

Max Load	60W Per port x 5
Output Voltage	12 VDC
Output Current @ Max Load	5A per port
Open Circuit Output Voltage	12.8 VDC
Coil Former	Double Section Bobbin

Environmental

Operating Ambient Temperature	-30°C - 40°C
Min Installation space between drivers	5" Inch
Thermal Class	B130°C

Dimming

Minimum Dimming Level	1%
-----------------------	----

Protections

Circuit Breaker	Primary and secondary push-to-reset
-----------------	-------------------------------------

Mechanical & Housing

Leads Primary	Terminal Blocks
Leads Secondary	Terminal Blocks
Length	11.33" (289.9mm)
Width	4.73" (120.2mm)
Height	4.26" (108.2mm)
Weight	15 lbs
Housing Material	Coated metal
Housing Color	Black
Junction Box	Yes
Mounting	Two Hole flange mounting

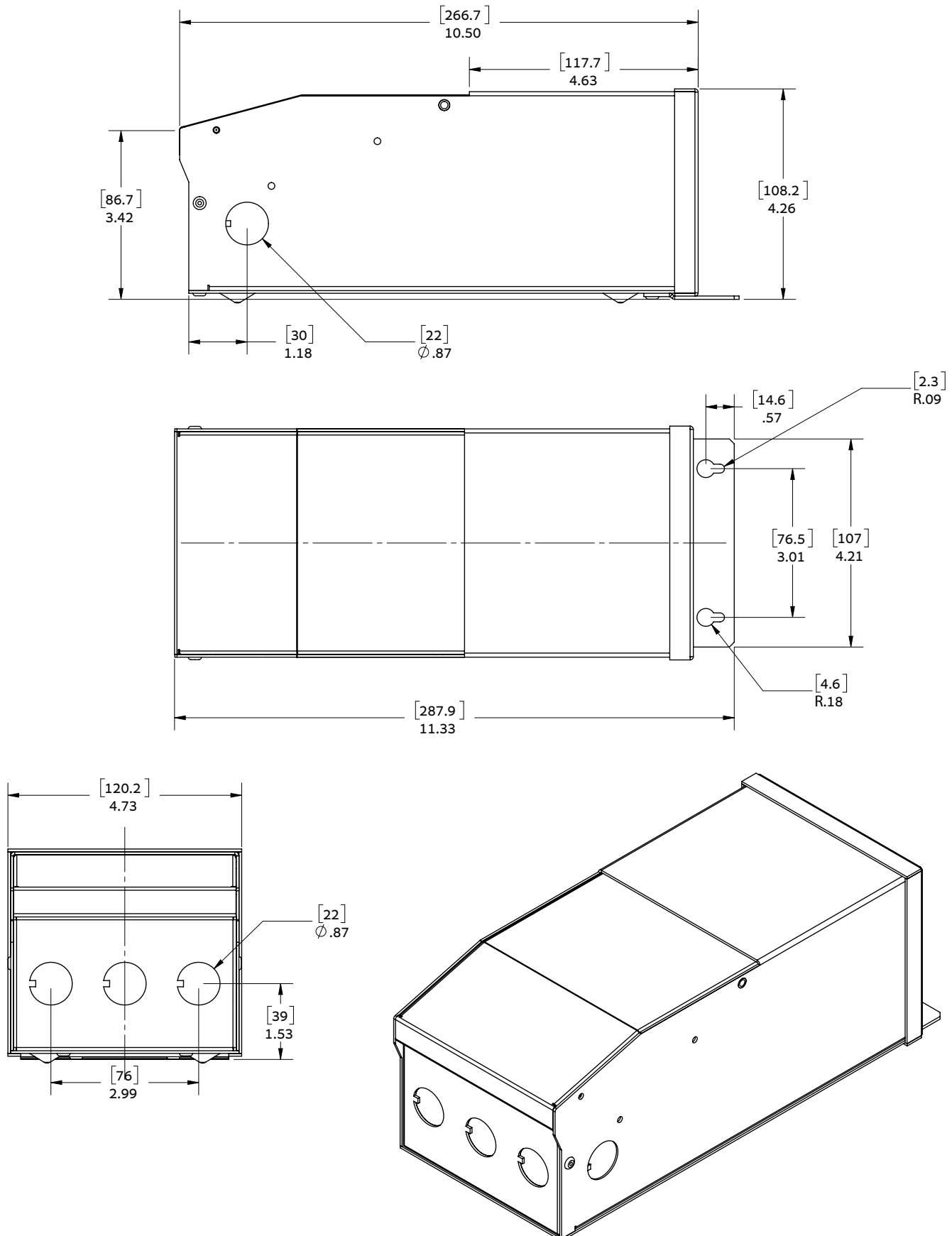
Approval Markings

Certificates / Approval Signs	ETL Listed, Class 2 output
-------------------------------	----------------------------

T-SERIES

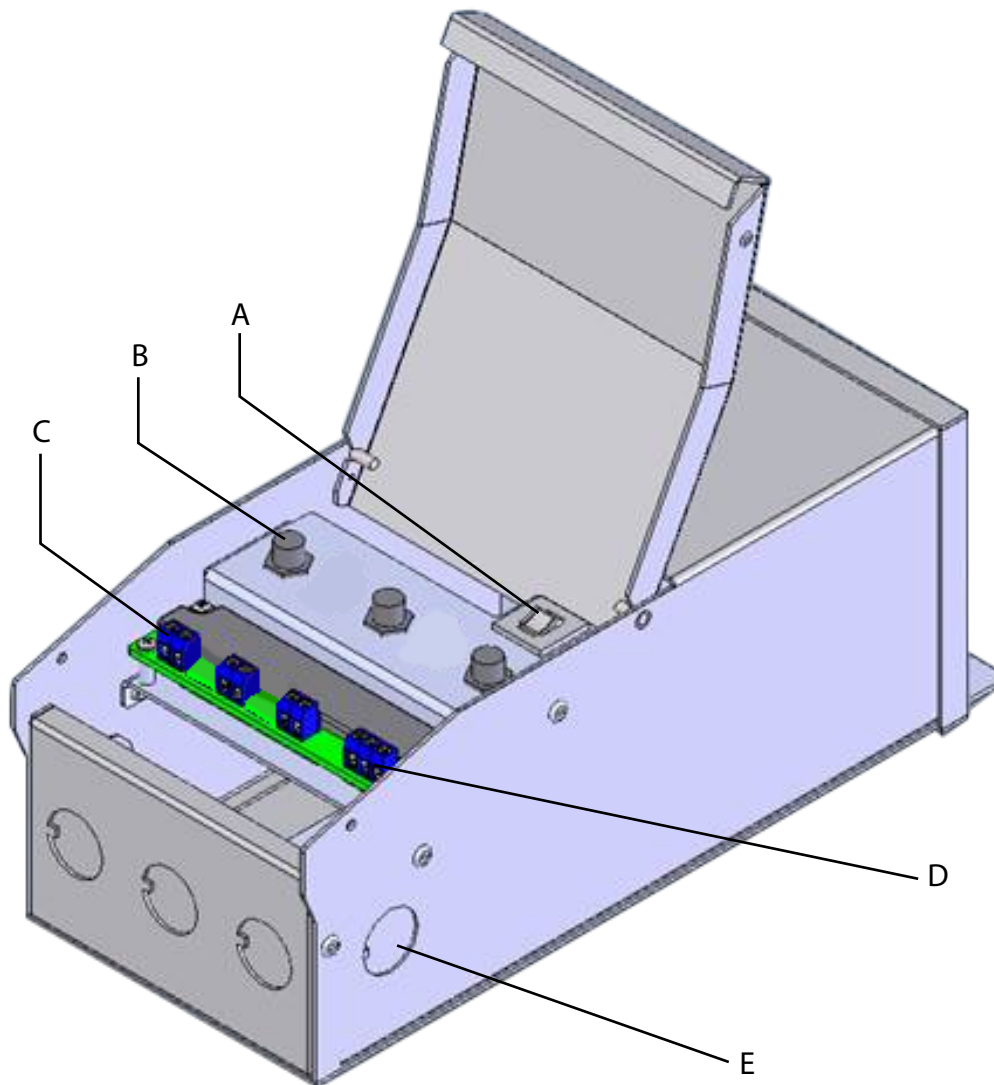
12VDC 300W DIMMABLE CLASS 2 MULTI OUTPUT LED DRIVER

MECHANICAL DRAWING

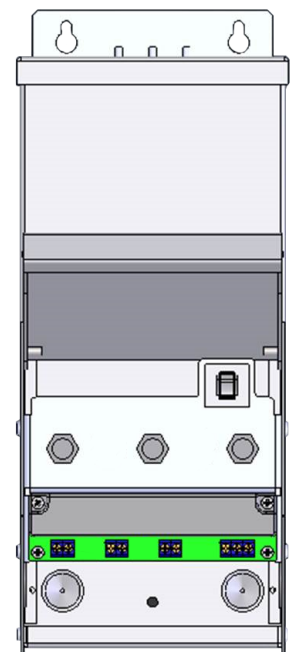


T-SERIES

12VDC 300W DIMMABLE CLASS 2 MULTI OUTPUT LED DRIVER



A	Primary circuit breaker
B	Secondary circuit breaker
C	Output terminal block
D	Input terminal block
E	Knockout holes



page 4