

OVERVIEW

The push-button Dimming Series of wall stations are a cost-effective solution for commercial lighting applications. Additionally, all sPODMRA switches have a patent pending wiring method that enables them to function either with or without a neutral connection. sPODMRA units come preconfigured for wiring without a neutral, however, if a connection to neutral is required by code, contractors can convert the unit in seconds.

FEATURES

- Programmable without removing switch plate
- MWO option supports up to 9 MWO devices when using a neutral
- sPODMRA MWO can be used in conjunction with WSXA MWO
- Compatible with 0-10V dimming
- Include Screwless Wall Plate: Available in WH, IV, GY, AL, BK, RD
- Each MWO device can switch and dim individually
- Switching and Dimming will be performed simultaneously across the devices connected through the communication wire

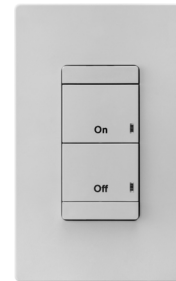
Warranty

Five-year limited warranty. This is the only warranty provided and no other statements in this specification sheet create any warranty of any kind. All other express and implied warranties are disclaimed. Complete warranty terms located at: www.acuitybrands.com/support/warranty/terms-and-conditions

Note: Actual performance may differ as a result of end-user environment and application. Specifications subject to change without notice.



sPODMRA Series Wall Switch



sPODMRA
On/Off
Single Relay



sPODMRA D
On/Off/Dimming
Single Relay



Items marked by a shaded background qualify for the Design Select program and ship in 15 days or less. To learn more about Design Select, visit www.acuitybrands.com/designselect.
*See ordering tree for details



Design Select options indicated by this color background.

ORDERING INFORMATION

spodmra		Example: sPODMRA MWO D 347 WH						
Series	eldoLED	Dimming	Voltage	Color ³	Max Dim Level ⁴	Min Dim Level ⁴		
sPODMRA Switchpod	[blank] none	[blank] ⁵ none	[blank] 120-277 VAC	WH White	[blank] 10 VDC	[blank] 0 VDC		
sPODMRA MWO Switchpod with Multi-way (3-Way) Operation	EZ ¹ eldoLED Driver Compatibility	D Dimming	347 ² 347 VAC	IV Ivory GY Gray AL Almond BK Black RD Red	9H 9 VDC 8H 8 VDC 7H 7 VDC	1V 1 VDC 2V 2 VDC 3V 3 VDC 4V 4 VDC 5V 5 VDC 6V 6 VDC		

Notes:

1. Max Dim Level default set to 9.1 VDC. Min Dim Level default set to 1.5 VDC.
2. Matching wall plate not included with 347 VAC units.
3. Matching wall plate provided for 120-277 VAC units.
4. For setting other than default, minimum order quantity of 30 units.
5. ONLY available with the MWO Series.

SSW				Example: SSW 1GNG OCC WH
Series	Number of Gangs	Mount	Color	
SSW Sealed Screwless Wall-Plate	1GNG Single Gang	[blank] Standard Wall Switch	WH White	IV Ivory

WALLP			
Series	Color	Multi-Pack Size	
WALLP1 Screwless Wall Plate Single Gang	WH White	M5 (5 Wall Plates)	
WALLP2 Screwless Wall Plate Dual Gang	IV Ivory		
	GY Gray		
	AL Light Almond		
	BK Black		
	RD Red		

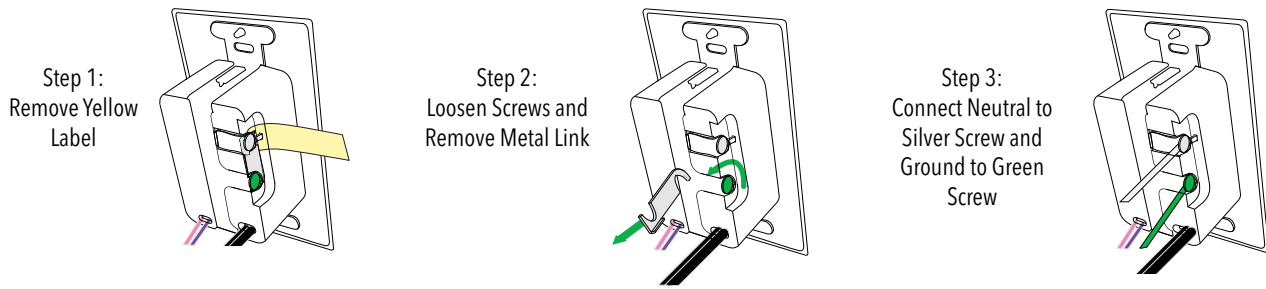
SPECIFICATIONS

Electrical	Input Ratings	120-277VAC, 50/60 Hz 347VAC, 50/60 Hz (with 347 option)
	Output Ratings	120VAC, 800W, 6.7A - Tungsten, Standard Ballast, Electronic Ballast 277VAC, 1200W, 4.3A - Tungsten, Standard Ballast, Electronic Ballast 347VAC, 1500W, 4.3A - Tungsten, Standard Ballast, Electronic Ballast 120/277/347VAC, 1/4 HP - Motor
	Relay Type	Latching
	Low Voltage Output Ratings	0-10VDC, Sinks <50mA
	Standards/ Ratings	Energy Management Equipment, UL916 (E167435)
Mechanical	Dimensions	2.74"H x 1.68"W x 1.63"D (70mm x 43mm x 41mm) - does not include ground strap
	Mounting	Single-Gang Box
	Connection Type	Low-Voltage Leads, Line-Voltage Leads
Environmental	Warrantied Operating Temperature	32°F to 140°F (0°C to 60°C)
	Relative Humidity	Up to 90%, Non-Condensing
	Standards/ Ratings	RoHS

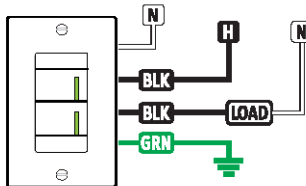
WIRING

CONVERSION FROM GROUND ONLY (NO NEUTRAL) TO NEUTRAL WIRING

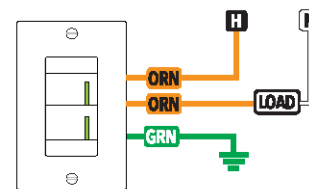
This product is pre-configured for wiring without a neutral; however, if connection to neutral is required by code, the unit easily converts in seconds.



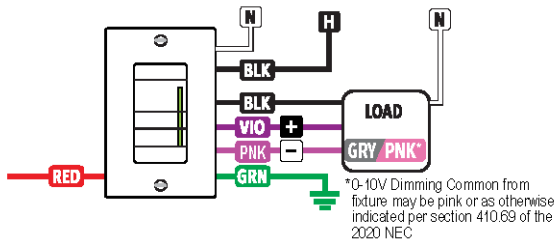
CONVERTIBLE NEUTRAL
SINGLE RELAY, 120-277 VAC



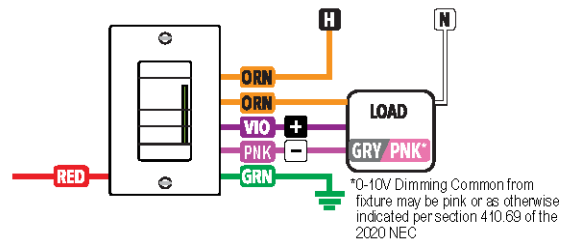
GROUND ONLY
SINGLE RELAY, 347 VAC



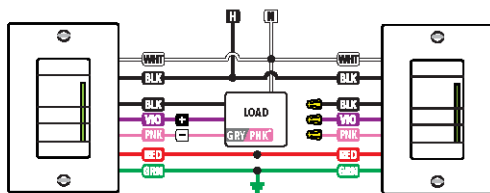
SINGLE RELAY, 120-277 VAC



SINGLE RELAY, 347 VAC

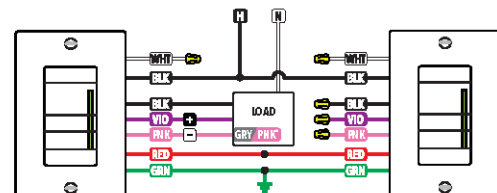


SINGLE RELAY, MULTI-WAY CONFIGURATION, 120-277 VAC



Note: up to 9 with neutral

SINGLE RELAY, MULTI-WAY CONFIGURATION, 120-277 VAC



Note: up to 2 with neutral-less

WIRE COLOR KEY

120-277 VAC WIRING

- BLK - Line Input
- BLK - Line Output
- VIO - Low Voltage Dim Output (0-10 VDC)
- PNK¹ - Low Voltage Common (0-10VDC)
- RED - Low Voltage Communication Wire

347 VAC WIRING (-347 Option)

Orange (ORN) wires replace black (BLK) wires

Notes:

1. Some Pink wires may come as Gray

NOTES

- Designed for constant hot power, not downstream of a line voltage switching relay
- Black wires can be used interchangeably
- 0-10V wires are not present on devices without D option
- Cap off 0-10V wires if dimming functionality is not being used
- Red Wire is not present on devices without MWO option
- Cap off red wire if Multi-Way functionality is not being used
- For ground Multi-Way Configurations ground must come from same source
- For neutral conversion Multi-Way Configurations power must come from the same panel
- Per NEC requirements, the 0-10V wires must be installed as class 1.
- The low voltage communication bus and 0-10V wires must not exceed 250 ft (76 m) and sized no less than 20 AWG.
- Dimming wires from individual MWO devices should only connect with fixture/driver dimming wires and never to another MWO device
- Low voltage communication bus is class 1. Do not wire line voltage to MWO bus, red wire.