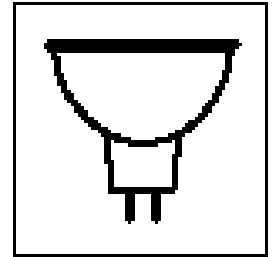
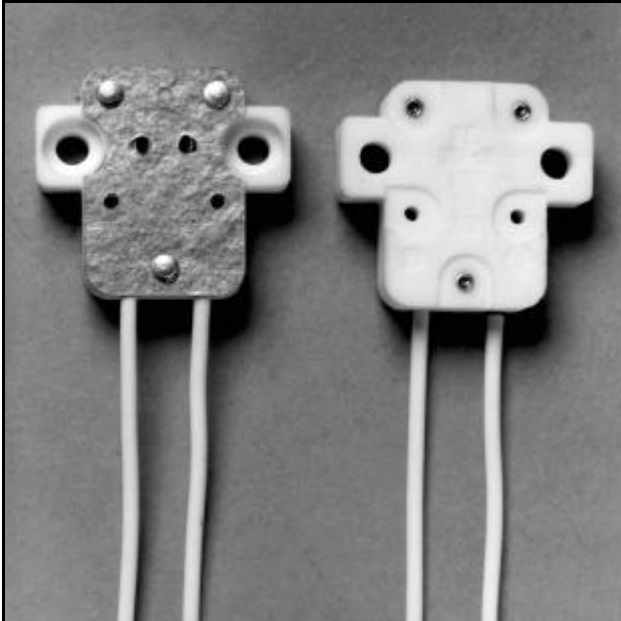


LAMP BASES: GX-5.3, GY-5.3

2-PIN
(ROUND PINS)
GX-5.3
(OVAL PINS)
GY-5.3



LOW/HIGH VOLTAGE HALOGEN LAMPHOLDERS



QCX-40, QCX-44

Note: For 100 watts and greater, ample convection or forced air flow is required to prevent socket damage. Lamp Pins should not exceed 225°C to prevent lamp failure. Consult factory for assistance.

QCX-40, 44

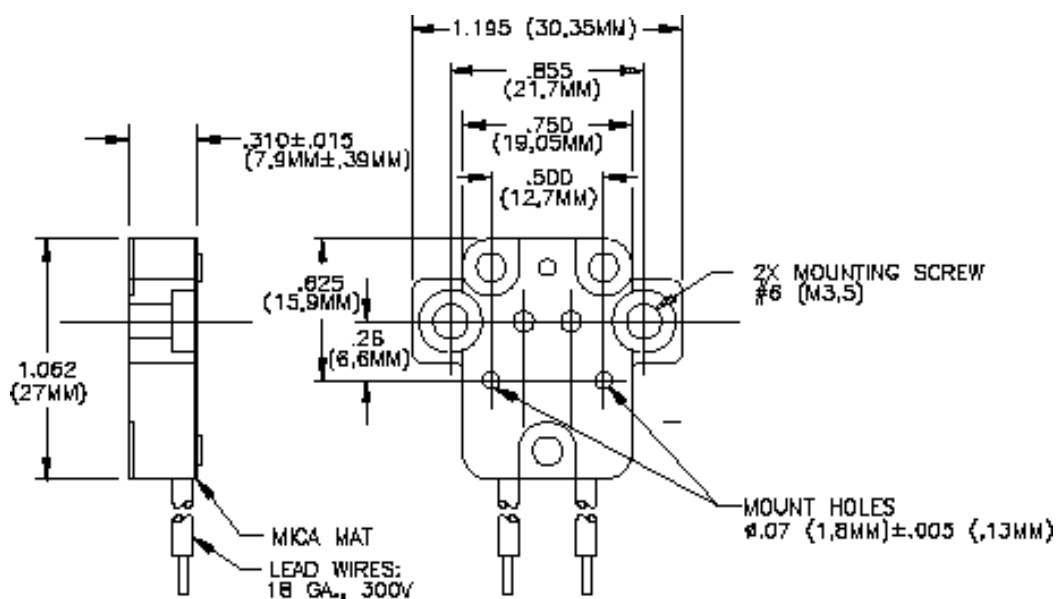
The QCX High or Low Voltage Lampholders are designed to the ANSI Codes and International Standards. Lampholders are UL and CSA recognized. Check for round or oval Lamp Pins to select proper Lampholder.

Features:

Ratings: Volts 300
Amps 12
Watts 450
Temp 300°C (on socket parts)

Lead Wire: 200°C Silicon Glass SF1
#18 ga. (Standard)
250°C PTFE (Special)

Construction: Steatite Body
Nickel Contacts
Mica Cover



QCX-40, 44

HIGH VOLTAGE - DUAL CONTACT QCX-40: FOR GY-5.3 LAMP BASES WITH OVAL PINS
LOW VOLTAGE - TRUE DUAL CONTACT QCX-44: FOR GX-5.3 LAMP BASES WITH ROUND PINS