

5325-ST

15 Amp Duplex Outlet/Receptacle, Self-Grounding, Light Almond

15 Amp, 125 Volt, NEMA 5-15R, 2-Pole, 3-Wire, Decora Duplex Receptacle, Straight Blade, Residential Grade, Self Grounding, Quickwire Push-In & Side Wired, Steel Strap - Light Almond

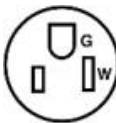
Leviton's comprehensive Residential Grade Receptacles portfolio includes devices rated for all residential applications in a variety of standard configurations. They are produced in an array of colors in both Decora and traditional styles. All duplex receptacles are designed with thermoplastic construction and feature a shallow build for maximum wiring room. Each duplex is also equipped with break-off plaster ears and tabs to allow for easy alignment and two-circuit conversion.



Color :  Light Almond

UPC Code : 078477274941

Country Of Origin : United States

NEMA :  5-15R

Available Colors :



Black



Brown



Ivory



White

Technical Information

Product Features

Amperage : 15 A

Body Material : Thermoplastic

Color : Light Almond

Face Material : Thermoplastic

Grounding : Self-Grounding

NEMA : 5-15R

Pole : 2

Strap Material : Steel

Termination : Quickwire Push-In & Side

Torque Range : 14 – 18 in.-lbs

Type : Duplex Receptacle

Voltage : 125 VAC

Warranty : 1-Year Limited

Wire : 3

Standards & Certifications

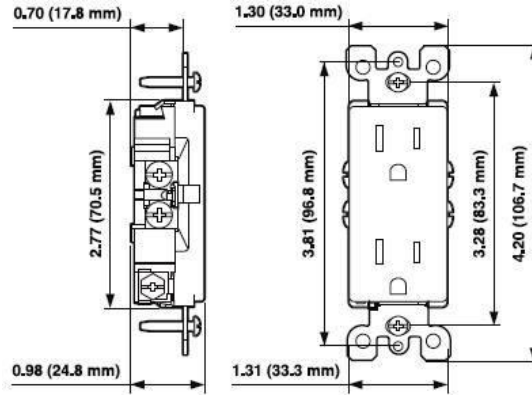
CSA C22.2 No. 42 : File 152105; Class 6233-01

NOM : NOM Certified

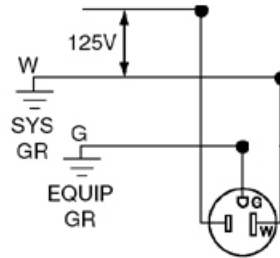
UL 498 : File E13399

Features and Benefits

- Side Wire and Quickwire holes accept No. 14 AWG copper wire for Cat. No. 5325
- Heavy-gauge zinc-plated steel mounting strap
- Heavy-duty double-wipe brass contacts for long service life
- Backed by a Limited One-Year Warranty
- Self-grounding when installed in a properly grounded metal wallbox



Wiring Diagram



5-15R

SPECIFICATION SUBMITTAL

JOB NAME:	CATALOG NUMBERS:	
<input type="text"/>	<input type="text"/>	<input type="text"/>
JOB NUMBER:	<input type="text"/>	<input type="text"/>

Leviton Manufacturing Co., Inc.

201 North Service Road, Melville, NY 11747

Telephone: +1-800-323-8920 · FAX: +1-800-832-9538 · Tech Line (8:30AM-7:30PM E.S.T. Monday-Friday):

+1-800-824-3005

Leviton Manufacturing of Canada, Ltd.

165 Hymus Boulevard, Pointe Claire, Quebec H9R 1E9 · Telephone: +1-800-469-7890 ·

FAX: +1-800-824-3005 · www.leviton.com/canada

Leviton S. de R.L. de C.V.

Lago Tana 43, Mexico DF, Mexico CP 11290 · Tel.: (+52)55-5082-1040 · FAX: (+52)5386-

1797 · www.leviton.com.mx

Visit our Website at: www.leviton.com

© 2021 Leviton Manufacturing Co., Inc. All Rights Reserved. Subject to change without notice.

Leviton has a global presence.

If you would like to know where your local Leviton office is located please go to:

www.leviton.com/international/contacts/

