

# ULTRA LED™ 4" and 6" MICRODISK™

## Surface Mount Downlight Kit

### Phase-Cut



### 0-10V



The SYLVANIA ULTRA LED MICRODISK is a slim profile LED downlight kit with remote driver that operates on 120-277V universal input voltage. The 1" thin design allows for installation directly under joists in new and remodel construction. The high performing MICRODISK's IC design allows for installation without a housing.

### Dimming

The SYLVANIA ULTRA LED MICRODISK is dimmable to 20% with low voltage 0-10V dimmers or phase-cut dimmers (product dependent).

### Quality of Light

The SYLVANIA ULTRA LED MICRODISK provides good color rendering (80 and 90 CRI), and color temperatures of 2700K, 3000K, 4000K and 5000K. LEDs have virtually no UV or infrared radiation to damage or fade furnishings, art or other objects.

### Optical Design

Optical design efficiently directs light output in an 120° beam angle with low glare.

## Application Information

### Applications

- Bathrooms/kitchens
- Closets/attics
- Soffits, stairwells, corridors, and any small spaces.

## Key Features & Benefits

- Lumen package:
  - 0-10V Dimmable
    - 700 lumens @ 8 watts
    - 1100 lumens @ 13 watts
  - Phase-Cut Dimmable
    - 650 lumens @ 8.5 watts
    - 900 lumens @ 12 watts
- Low profile design for installation in shallow spaces
- Replacement for up to 100W incandescent lamps
- For installation into 4" and 6" ceiling cut-outs
- 6" MICRODISK can be used in 8" applications with the trim extender accessory
- CCT: 2700K, 3000K, 4000K and 5000K
- Dimmable down to 20%
- 50,000 hours life (L<sub>70</sub>)
- Multiple input voltages:
  - 120-277V
  - 120V
- Suitable for dry, damp and wet locations
- Reduces energy consumption up to 87%
- Lasts up to 25 times longer than incandescent lamps
- No warm-up time, instant-on with full light output and stable lamp to lamp color
- 5VA fire-rated junction box eliminates need for recessed can

## Product Offering

| Lumen Output | Wattage | Color Temperature          | CRI |
|--------------|---------|----------------------------|-----|
| 650          | 8.5     | 2700K, 3000K, 4000K, 5000K | 90  |
| 700          | 8       | 3000K, 4000K, 5000K        | 80  |
| 900          | 12      | 2700K, 3000K, 4000K, 5000K | 90  |
| 1100         | 13      | 3000K, 4000K, 5000K        | 80  |

## Specifications and Certifications



This light source meets restrictions on hazardous substances.



## Specification Data

|             |      |
|-------------|------|
| Catalog #   | Type |
| Project     |      |
| Comments    |      |
| Prepared by |      |

## Specifications

### Energy Data

Minimum Starting Temp: -20°C (-4°F)  
 EMI/RFI: FCC Title 47 CFR, Part 15, Class B  
 Sound Rating: <24dBA  
 Input Voltage: 120V/277V  
 Input Frequency: 60Hz

Power Factor: >0.90

THD: <20%  
 Maximum Ambient Operating Temperature  
 (Insulated Ceiling): 40°C (104°F)  
 Maximum Ambient Operating Temperature  
 (Non-Insulated Ceiling): 40°C (104°F)

### Color

Correlated Color Temperature (CCT): 2700K, 3000K, 4000K, 5000K  
 Color Rendering Index (CRI): 80 and 90 CRI  
 R9: 13

## Ordering Information

| Item Number                       | Ordering Abbreviation | Input Voltage | Ceiling Cut-out | Incandescent Wattage | Replaced Nominal Wattage | Delivered Light Output (lm) | Color Temperature | CRI | Avg. Rated Life (hrs.)* | Dimmable                |
|-----------------------------------|-----------------------|---------------|-----------------|----------------------|--------------------------|-----------------------------|-------------------|-----|-------------------------|-------------------------|
| <b>0-10V Low Voltage Dimmable</b> |                       |               |                 |                      |                          |                             |                   |     |                         |                         |
| 75030                             | LED/MD4/700/830/UNV   | 120/277V      | 4"              | 65W                  | 8W                       | 700                         | 3000K             | 80  | 50,000                  | Yes (0-10V Low Voltage) |
| 71196                             | LED/MD4/700/840/UNV   | 120/277V      | 4"              | 65W                  | 8W                       | 700                         | 4000K             | 80  | 50,000                  | Yes (0-10V Low Voltage) |
| 75031                             | LED/MD4/700/850/UNV   | 120/277V      | 4"              | 65W                  | 8W                       | 700                         | 5000K             | 80  | 50,000                  | Yes (0-10V Low Voltage) |
| 75032                             | LED/MD6/1100/830/UNV  | 120/277V      | 6"              | 100W                 | 13W                      | 1100                        | 3000K             | 80  | 50,000                  | Yes (0-10V Low Voltage) |
| 71197                             | LED/MD6/1100/840/UNV  | 120/277V      | 6"              | 100W                 | 13W                      | 1100                        | 4000K             | 80  | 50,000                  | Yes (0-10V Low Voltage) |
| 75033                             | LED/MD6/1100/850/UNV  | 120/277V      | 6"              | 100W                 | 13W                      | 1100                        | 5000K             | 80  | 50,000                  | Yes (0-10V Low Voltage) |
| <b>Phase-Cut Dimmable</b>         |                       |               |                 |                      |                          |                             |                   |     |                         |                         |
| 40051                             | LED/MD4/650/DIM/927   | 120V          | 4"              | 50W                  | 8.5W                     | 650                         | 2700K             | 90  | 50,000                  | Yes (Phase-Cut)         |
| 40052                             | LED/MD4/650/DIM/930   | 120V          | 4"              | 50W                  | 8.5W                     | 650                         | 3000K             | 90  | 50,000                  | Yes (Phase-Cut)         |
| 40053                             | LED/MD4/650/DIM/940   | 120V          | 4"              | 50W                  | 8.5W                     | 650                         | 4000K             | 90  | 50,000                  | Yes (Phase-Cut)         |
| 40054                             | LED/MD4/650/DIM/950   | 120V          | 4"              | 50W                  | 8.5W                     | 650                         | 5000K             | 90  | 50,000                  | Yes (Phase-Cut)         |
| 40055                             | LED/MD6/900/DIM/927   | 120V          | 6"              | 75W                  | 12W                      | 900                         | 2700K             | 90  | 50,000                  | Yes (Phase-Cut)         |
| 40056                             | LED/MD6/900/DIM/930   | 120V          | 6"              | 75W                  | 12W                      | 900                         | 3000K             | 90  | 50,000                  | Yes (Phase-Cut)         |
| 40057                             | LED/MD6/900/DIM/940   | 120V          | 6"              | 75W                  | 12W                      | 900                         | 4000K             | 90  | 50,000                  | Yes (Phase-Cut)         |
| 40058                             | LED/MD6/900/DIM/950   | 120V          | 6"              | 75W                  | 12W                      | 900                         | 5000K             | 90  | 50,000                  | Yes (Phase-Cut)         |

\*LED lamp life is defined as the number of hours when 50% of an average group of identical lamps reached 70% of initial lumens.  
 Beam angle = 120°

## Ordering Guide

| LED | / | MD                        | X              | / | XXXX                      | / | 8        | XX  | / | UNV                           |
|-----|---|---------------------------|----------------|---|---------------------------|---|----------|---|---|-------------------------------|
| LED | / | Product Name<br>MICRODISK | Size<br>4", 6" | / | Light Output<br>700, 1100 | / | CRI = 80 | Color Temperature<br>30 = 3000K<br>40 = 4000K<br>50 = 5000K | / | Universal Voltage<br>120-277V |

## Accessories

### Trim Rings

| Item Number | Finish                         | Description     |
|-------------|--------------------------------|-----------------|
| 74992       | Dark Bronze 4" Trim Ring       | LED/MD4TRIMDKBZ |
| 74993       | Black 4" Trim Ring             | LED/MD4TRIMBLK  |
| 74994       | Oil Rubbed Bronze 4" Trim Ring | LED/MD4TRIMORBZ |
| 74995       | Satin 4" Trim Ring             | LED/MD4TRIMSN   |
| 74996       | Dark Bronze 6" Trim Ring       | LED/MD6TRIMDKBZ |
| 74997       | Black 6" Trim Ring             | LED/MD6TRIMBLK  |
| 74998       | Oil Rubbed Bronze 6" Trim Ring | LED/MD6TRIMORBZ |
| 74999       | Satin 6" Trim Ring             | LED/MD6TRIMSN   |
| 75082       | Trim Ring Extender             | RT6/8/TRIMEXT   |



## Energy Savings

| Basic Product Description | LED Lumens | LED Life | Traditional Lamp Types | Lumens | Life | Watts Saved With MD | MD Energy Savings* | MD Life Benefit |
|---------------------------|------------|----------|------------------------|--------|------|---------------------|--------------------|-----------------|
| MICRODISK                 | 700        | 50,000   | Incandescent 100BR40   | 935    | 2000 | 57                  | \$313              | 25x             |
| MICRODISK                 | 1100       | 50,000   | 120W Incandescent      | 1150   | 2000 | 107                 | \$588              | 25x             |

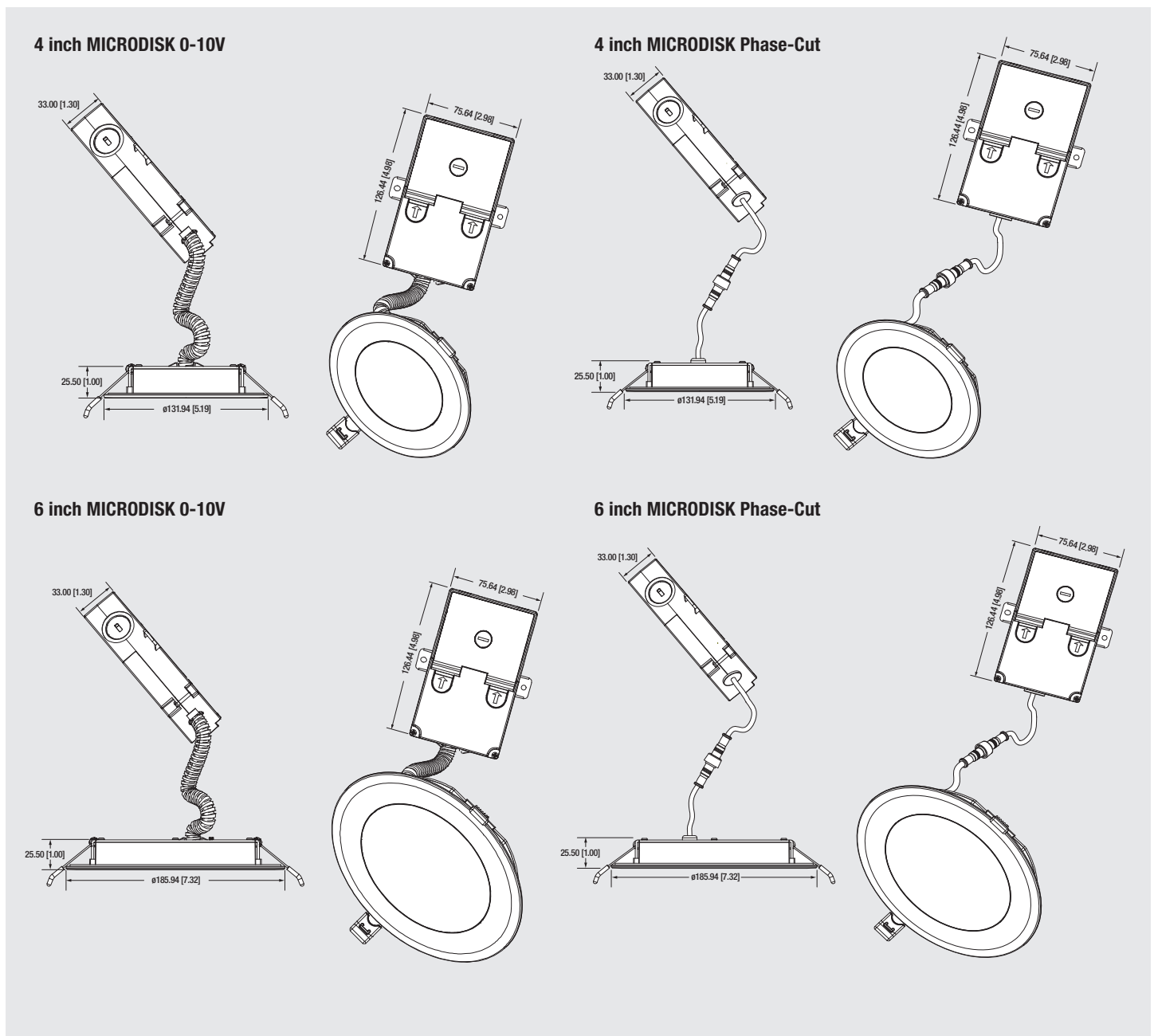
\*Based on \$0.11/kWh over 35,000 hours life.

## Application Information

### Application Notes

1. Operating temperature range between -4°F and +104°F (-20°C and +40°C).
2. Complies with cULus Wet location listed, ceiling only (shower rated), and Damp location listed ceiling and wall.
3. Not intended for use with emergency light fixtures or exit lights.
4. For detailed warranty information, please see [www.sylvania.com/Warranty](http://www.sylvania.com/Warranty).
5. Compatible with IOTA inverter series (model IIS-25, IIS-35, IIS-50, IIS-125, IIS-375 and IIS-550), and Philips Bodine model ELI-S-20, ELI-S-100 and ELI-S-250.

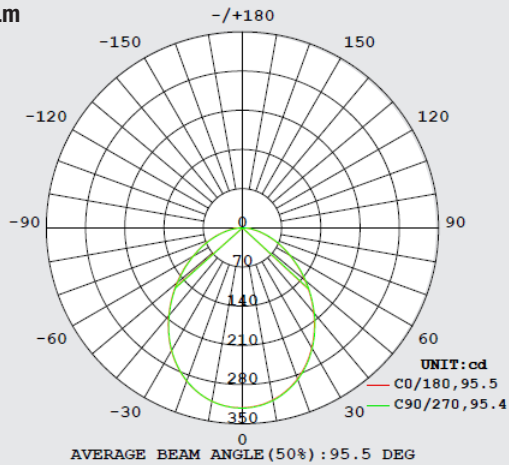
## Assembly Diagram



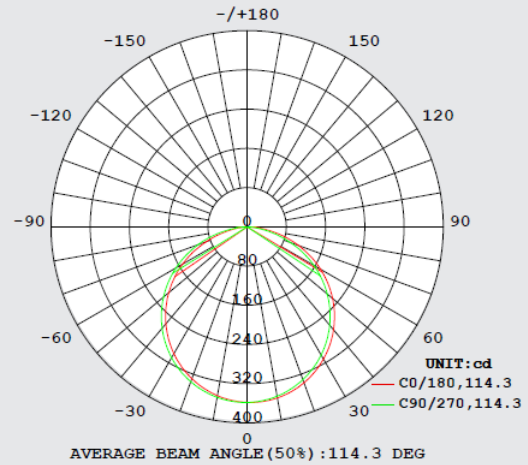
## Photometric Information

### Polar Charts

#### 700 Lm



#### 1100 Lm



### Zonal Lumen Distribution

#### 700 Lm

| Zone  | Lumens | % Retrofit Kit |
|-------|--------|----------------|
| 0-20  | 115    | 15             |
| 0-30  | 240    | 31             |
| 0-40  | 382    | 50             |
| 0-60  | 628    | 82             |
| 0-80  | 747    | 98             |
| 0-90  | 758    | 100            |
| 10-90 | 728    | 96             |
| 20-40 | 266    | 35             |
| 20-50 | 401    | 52             |
| 40-70 | 323    | 42             |
| 60-80 | 118    | 15             |
| 70-80 | 41     | 5              |
| 80-90 | 11     | 1              |
| 0-180 | 758    | 100            |

#### 1100 Lm

| Zone  | Lumens | % Retrofit Kit |
|-------|--------|----------------|
| 0-20  | 131    | 12             |
| 0-30  | 278    | 26             |
| 0-40  | 458    | 44             |
| 0-60  | 816    | 78             |
| 0-80  | 1019   | 98             |
| 0-90  | 1037   | 100            |
| 10-90 | 1003   | 96             |
| 20-40 | 327    | 31             |
| 20-50 | 514    | 49             |
| 40-70 | 488    | 47             |
| 60-80 | 203    | 19             |
| 70-80 | 72     | 7              |
| 80-90 | 17     | 1              |
| 0-180 | 1037   | 100            |

### Illuminance at a Distance

| 700 Lm                               |                         |                       |               |
|--------------------------------------|-------------------------|-----------------------|---------------|
| Distance to Illuminated Plane (Feet) | Footcandles Beam Center | Footcandles Beam Edge | Beam Diameter |
| 2                                    | 80.5                    | 12.2                  | 4.4           |
| 4                                    | 20.1                    | 3.1                   | 8.8           |
| 6                                    | 8.9                     | 1.4                   | 13.2          |
| 8                                    | 5.0                     | 0.8                   | 17.6          |
| 10                                   | 3.2                     | 0.5                   | 22.0          |
| 12                                   | 2.2                     | 0.3                   | 26.4          |
| 1100 Lm                              |                         |                       |               |
| Distance to Illuminated Plane (Feet) | Footcandles Beam Center | Footcandles Beam Edge | Beam Diameter |
| 2                                    | 89.5                    | 7.1                   | 6.2           |
| 4                                    | 22.4                    | 1.8                   | 12.4          |
| 6                                    | 9.9                     | 0.8                   | 18.6          |
| 8                                    | 5.6                     | 0.4                   | 24.8          |
| 10                                   | 3.6                     | 0.3                   | 31.0          |
| 12                                   | 2.5                     | 0.2                   | 37.2          |

### Spacing to Mounting Height Ratio

| 700 Lm                       |      |
|------------------------------|------|
| Spacing Criterion (0-180)    | 1.16 |
| Spacing Criterion (90-270)   | 1.18 |
| Spacing Criterion (Diagonal) | 1.26 |
| 1100 Lm                      |      |
| Spacing Criterion (0-180)    | 1.26 |
| Spacing Criterion (90-270)   | 1.26 |
| Spacing Criterion (Diagonal) | 1.40 |

LEDVANCE LLC  
 200 Ballardvale Street  
 Wilmington, MA 01887 USA  
 Phone 1-800-LIGHTBULB (1-800-544-4828)  
 www.sylvania.com

SYLVANIA and LEDVANCE are registered trademarks.  
 All other trademarks are those of their respective owners.  
 Licensee of product trademark SYLVANIA in general lighting.  
 Specifications subject to change without notice.

[/sylvania](#) [/sylvania](#)

