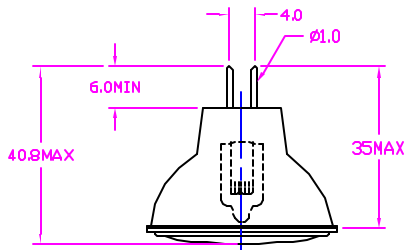
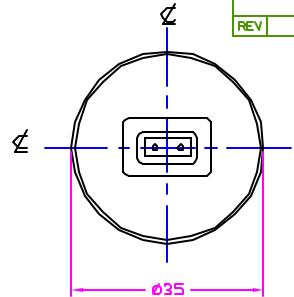
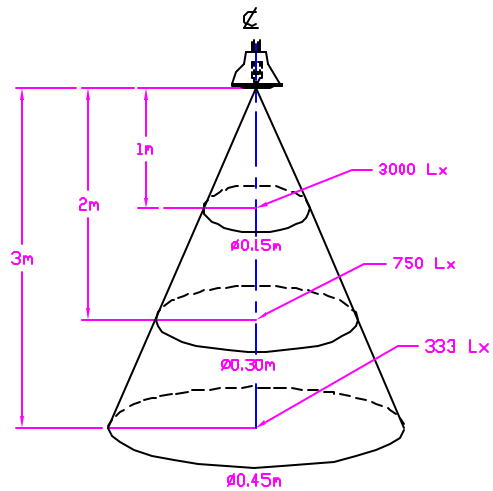


PWG NO. 1000931 BH 1

REVISIONS			
REV	DESCRIPTION	DATE	APPROVED



- NOTES:
1. ALL DIMENSIONS ARE IN MM UNLESS OTHERWISE SPECIFIED.
 2. SEAL TEMP SHOULD BE MAINTAINED BELOW 350°C.
 3. THE DIMENSIONS AND SPECIFICATIONS OF PRODUCT LISTED IN THIS SHEET ARE SUBJECT TO CHANGE WITHOUT NOTICE FOR IMPROVEMENT.

CHARACTERISTICS	
VOLTAGE	6 V
WATTAGE	10±1.0 W
CANDLE POWER	3000 cd
BEAM SPREAD	8.5°
COLOR TEMP	3050 K
AVERAGE LIFE	200 HRS
BASE	GZ4
FILAMENT	D-6

NEXT ASSY	USED ON

ITEM	QTY	DESCRIPTION	CODE IDENT	PART NUMBER	REMARKS
LIST OF MATERIALS					
UNLESS OTHERWISE SPECIFIED DIMENSIONS ARE IN INCHES		CONTRACT NO.		USHIO AMERICA, INC. 10550 Comdan Dr. Cypress, CA 90630	
DECIMALS .X ± -		APPROVALS			
.XX ±		DRAWN		DATE	
.XXX ±		R.AMPARO		05/11/00	
ANGLES		CHECKS		TITLE	
DRILLED HOLES PER AND 10387		D.GILCZYNSKI		05/11/00	
REMOVE BURRS AND SHARP EDGES		ENGR			
ALL DIMENSIONS AFTER PLATING		MFG			
MATERIAL		QUAL		SIZE	
COMPOSITE				CODE IDENT NOS	
FINISH		DRGN ACTVY		PWG NO.	
		DVT ACTVY		1000931	
				SCALE	
				NONE	
				WEIGHT	
				SHEET	
				1 OF 1	

4

3

1

D

D

C

C

B

B

A

A

4

3

2

1

CAD