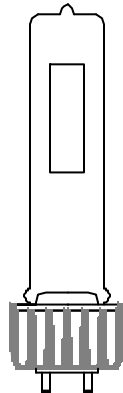
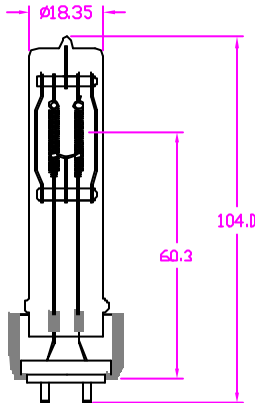
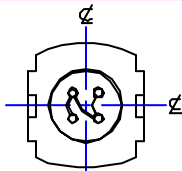


REVISIONS			
REV	DESCRIPTION	DATE	APPROVED



- NOTES:
1. ALL DIMENSIONS ARE IN MM UNLESS OTHERWISE SPECIFIED.
 2. SEAL TEMP SHOULD BE MAINTAINED BELOW 300°C.
 3. THE DIMENSIONS AND SPECIFICATIONS OF PRODUCT LISTED IN THIS SHEET ARE SUBJECT TO CHANGE WITHOUT NOTICE FOR IMPROVEMENT.

CHARACTERISTICS	
VOLTAGE	77 V
WATTAGE	530 W
COLOR TEMP	3050 K
LUMENS	12180 Lm
FILAMENT	4-C8
AVERAGE LIFE	2000 HRS
BASE	HEAT SHNK
BURNING POSITION	ANY

NEXT ASSY	USED ON

ITEM	QTY	DESCRIPTION	CODE IDENT	PART NUMBER	REMARKS		
LIST OF MATERIALS							
UNLESS OTHERWISE SPECIFIED DIMENSIONS ARE IN INCHES		CONTRACT NO.		USHIO AMERICA, INC. 5440 Carrizosa Ave. Cypress, CA 90630			
DECIMALS X ± -		APPROVALS				DATE	
.XX ±		DRAWN				R.AMPARO 05/15/01	
.XXX ±		CHKD				J.COOPER 05/15/01	
ANGLES ±		ENGR		TITLE			
DRILLED HOLES PER AWD 10387		MFG		HPL-550/77X, JS77V-550WX HALOGEN LAMP			
REMOVE BURRS AND SHARP EDGES		QUAL					
ALL DIMENSIONS AFTER PLATING		DRWN ACTV					
MATERIAL		DRWN ACTV					
COMPOSITE		DVT ACTV		SIZE			
FINISH		SCALE		NONE			
APPLICATION		WEIGHT		DWG NO.			
		NONE		1000669			
				SHEET			
				1 OF 1			

4

3

1

D

D

C

C

B

B

A

A

4

3

2

1

CAD