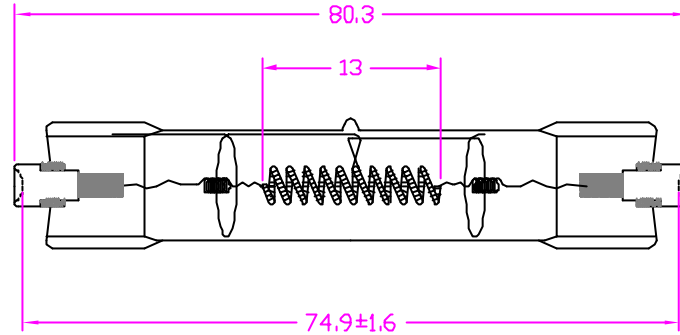
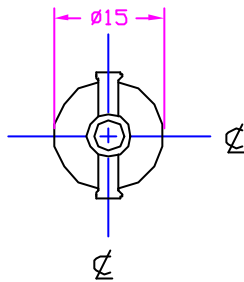


REVISIONS			
REV	DESCRIPTION	DATE	APPROVED



NOTES:

1. ALL DIMENSIONS ARE IN MM UNLESS OTHERWISE SPECIFIED.
2. SEAL TEMP SHOULD BE MAINTAINED BELOW 350°C.
3. THE DIMENSIONS AND SPECIFICATIONS OF PRODUCT LISTED IN THIS SHEET ARE SUBJECT TO CHANGE WITHOUT NOTICE FOR IMPROVEMENT.

CHARACTERISTICS	
VOLTAGE	120 V
WATTAGE	420 W
COLOR TEMP	3200 K
LUMENS	11000 Lm
AVERAGE LIFE	75 HRS
FILAMENTTYPE	CC-B
BASE TYPE	R7s-18
BULB FINISH	CLEAR

ITEM	QTY	DESCRIPTION	CODE IDENT	PART NUMBER	REMARKS
LIST OF MATERIALS					
UNLESS OTHERWISE SPECIFIED DIMENSIONS ARE IN INCHES		CONTRACT NO.		USHIO AMERICA, INC. 5440 Cerritos Ave. Cypress, CA 90630 FFM JPD120V-420WC1 DOUBLE ENDED HALOGEN LAMP	
DECIMALS .X ± -		APPROVALS			
.XX ±		DATE			
.XXX ±		DRAWN R.AMPARO 04/17/01			
ANGLES ±		CHKD 04/17/01		TITLE	
DRILLED HOLES PER AND 10387 REMOVE BURRS AND SHARP EDGES ALL DIMENSIONS AFTER PLATING		ENGR		SIZE	
MATERIAL COMPOSITE		MFG		CODE IDENT NO.	
FINISH		QUAL		DWG NO.	
		DSGN ACTVY		B FFM 1000518	
		GOVT ACTVY		SCALE NONE	
				WEIGHT	
				SHEET 1 OF 1	

4

3

1

4

3

2

1

CAD