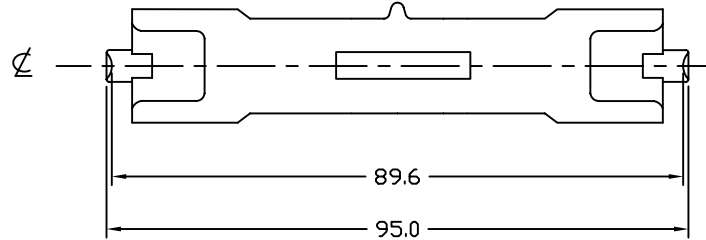
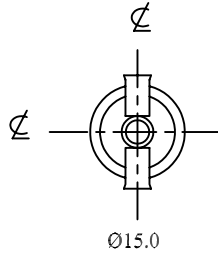


REVISIONS			
REV	DESCRIPTION	DATE	APPROVED



NOTES:

1. ALL DIMENSIONS ARE IN MM.
2. SEAL TEMP: SHOULD BE MAINTAINED BELOW 350°C
3. THE DIMENSIONS AND SPECIFICATIONS OF PRODUCT LISTED IN THIS SHEET ARE SUBJECT TO CHANGE WITHOUT NOTICE FOR IMPROVEMENT.

CHARACTERISTICS	
VOLTAGE	240 V
WATTAGE	600 W
COLOR TEMP.	3200 K
TOTAL LUMEN	15000 Lm
BASE TYPE	R7s-18
AVERAGE LIFE	75 HRS
FILAMENT TYPE	CC-8
BURN POSITION	Any

ITEM	QTY	DESCRIPTION	CODE IDENT	PART NUMBER	REMARKS
LIST OF MATERIALS					
UNLESS OTHERWISE SPECIFIED DIMENSIONS ARE IN INCHES DECIMALS .X ± - .XX ± - .XXX ± - ANGLES ± - DRILLED HOLES PER AND 10387 REMOVE BURRS AND SHARP EDGES ALL DIMENSIONS AFTER PLATING		CONTRACT NO.		USHIO AMERICA, INC. 5440 Cerritos Avenue Cypress, CA 90630	
MATERIAL COMPOSITE		APPROVALS			
FINISH		DATE		TITLE FEA JPD240V-600WC	
APPLICATION		DRAWN R.AMPARO 12/20/99			
		CHKD D.GILCZYNSKI 12/20/99		SIZE B	
		ENGR			
		MFG		CODE IDENT NO. FEA	
		QUAL			
		DSGN ACTVY		DWG NO. 1000508	
		GOVT ACTVY			
				SCALE NONE	
				WEIGHT	
				SHEET 1 OF 1	

4

3



1

D

D

C

C

B

B

A

A

4

3



2

1

CAD