

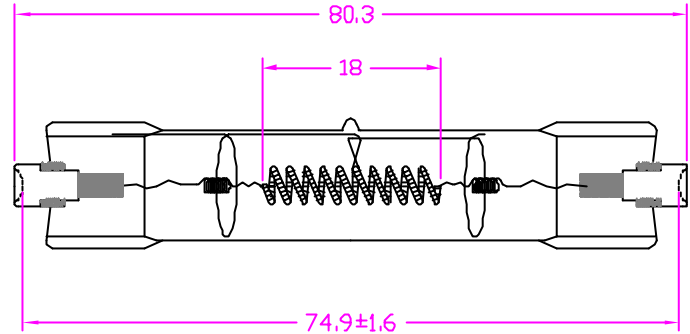
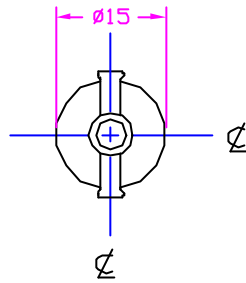
4

3

DWG NO. 1000498 SH 1

1

REVISIONS			
REV	DESCRIPTION	DATE	APPROVED



NOTES:

1. ALL DIMENSIONS ARE IN MM UNLESS OTHERWISE SPECIFIED.
2. SEAL TEMP SHOULD BE MAINTAINED BELOW 350°C.
3. THE DIMENSIONS AND SPECIFICATIONS OF PRODUCT LISTED IN THIS SHEET ARE SUBJECT TO CHANGE WITHOUT NOTICE FOR IMPROVEMENT.

CHARACTERISTICS	
VOLTAGE	120 V
WATTAGE	400 W
COLOR TEMP	3200 K
LUMENS	10400 Lm
AVERAGE LIFE	200 HRS
FILAMENTTYPE	CC-B
BASE TYPE	R7s-18
BULB FINISH	CLEAR

NEXT ASSY	USED ON

ITEM	QTY	DESCRIPTION	CODE IDENT	PART NUMBER	REMARKS
LIST OF MATERIALS					
UNLESS OTHERWISE SPECIFIED DIMENSIONS ARE IN INCHES		CONTRACT NO.		USHIO AMERICA, INC. 5440 Cerritos Ave. Cypress, CA 90630	
DECIMALS .X ± - .XX ± .XXX ±		APPROVALS			
ANGLES ±		DATE		TITLE FDA JPD120V-400W DOUBLE ENDED HALOGEN LAMP	
DRILLED HOLES PER AND 10307 REMOVE BURRS AND SHARP EDGES ALL DIMENSIONS AFTER PLATING		DRAWN R.AMPARO 04/17/01			
MATERIAL COMPOSITE		CHKD 04/17/01		SIZE B CODE IDENT NO. FDA DWG NO. 1000498	
		ENGR			
FINISH		MFG		SCALE NONE WEIGHT SHEET 1 OF 1	
		QUAL			
		DSGN ACTVY			
		GOVT ACTVY			

4

3

2

1

CAD