

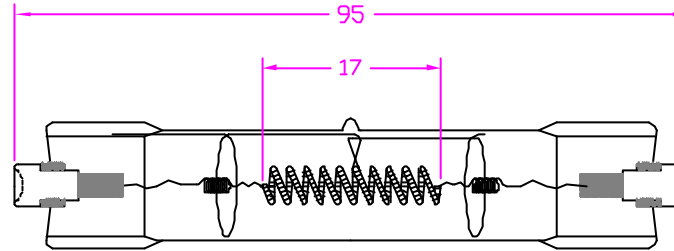
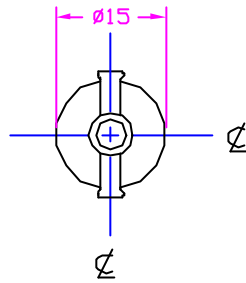
4

3

DWG NO. 1000486 SH 1

1

REVISIONS			
REV	DESCRIPTION	DATE	APPROVED



NOTES:

1. ALL DIMENSIONS ARE IN MM UNLESS OTHERWISE SPECIFIED.
2. SEAL TEMP SHOULD BE MAINTAINED BELOW 350°C.
3. THE DIMENSIONS AND SPECIFICATIONS OF PRODUCT LISTED IN THIS SHEET ARE SUBJECT TO CHANGE WITHOUT NOTICE FOR IMPROVEMENT.

CHARACTERISTICS	
VOLTAGE	120 V
WATTAGE	600 W
COLOR TEMP	3250 K
LUMENS	17000 Lm
AVERAGE LIFE	75 HRS
FILAMENTTYPE	CC-B
BASE TYPE	R7s-18
BULB FINISH	CLEAR

NEXT ASSY	USED ON
	APPLICATION

ITEM	QTY	DESCRIPTION	CODE IDENT	PART NUMBER	REMARKS
LIST OF MATERIALS					
UNLESS OTHERWISE SPECIFIED DIMENSIONS ARE IN INCHES		CONTRACT NO.		USHIO AMERICA, INC. 5440 Cerritos Ave. Cypress, CA 90630	
DECIMALS .X ± - .XX ± .XXX ±		APPROVALS			
ANGLES ±		DATE		TITLE FCB JPD120V-600WD DOUBLE ENDED HALOGEN LAMP	
DRILLED HOLES PER AND 10307 REMOVE BURRS AND SHARP EDGES ALL DIMENSIONS AFTER PLATING		DRAWN R.AMPARO 04/17/01			
MATERIAL COMPOSITE		CHKD 04/17/01		SIZE B CODE IDENT NO. FCB DWG NO. 1000486	
FINISH		ENGR			
		MFG		SCALE NONE WEIGHT SHEET 1 OF 1	
		QUAL			
		DSGN ACTVY			
		GOVT ACTVY			

4

3

2

1

CAD