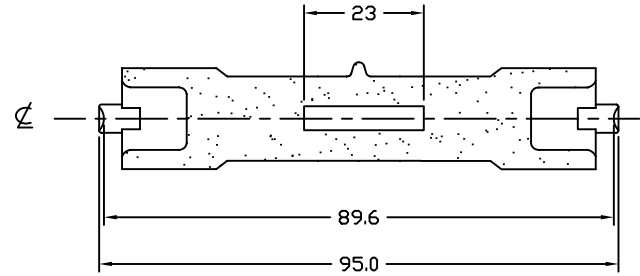
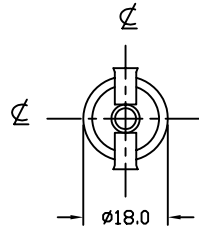


REVISIONS

REV	DESCRIPTION	DATE	APPROVED
-----	-------------	------	----------



NOTES:

1. ALL DIMENSIONS ARE IN MM.
2. SEAL TEMP: SHOULD BE MAINTAINED BELOW 350°C
3. THE DIMENSIONS AND SPECIFICATIONS OF PRODUCT LISTED IN THIS SHEET ARE SUBJECT TO CHANGE WITHOUT NOTICE FOR IMPROVEMENT.

CHARACTERISTICS	
VOLTAGE	120 V
WATTAGE	1000 W
COLOR TEMP.	3200 K
TOTAL LUMEN	26000 Lm
BASE TYPE	R7s-18
AVERAGE LIFE	150 HRS
FILAMENT TYPE	CC-8
BURN POSITION	Any

ITEM	QTY	DESCRIPTION	CODE IDENT	PART NUMBER	REMARKS
<b>LIST OF MATERIALS</b>					
UNLESS OTHERWISE SPECIFIED DIMENSIONS ARE IN INCHES		CONTRACT NO.		<b>USHIO AMERICA, INC.</b> 5440 Cerritos Avenue Cypress, CA 90630	
DECIMALS .X ± .XX ± .XXX ±		APPROVALS			
ANGLES ±		DATE		TITLE <b>FBY</b> <b>JPD120V-1000WC5F</b>	
DRILLED HOLES PER AND 10387 REMOVE BURRS AND SHARP EDGES ALL DIMENSIONS AFTER PLATING		DRAWN			
MATERIAL <b>COMPOSITE</b>		ENGR		SIZE <b>B</b>	
FINISH		MFG			
		QUAL		CODE IDENT NO. <b>FBY</b>	
		DSGN ACTVY			
		GOVT ACTVY		DWG NO. <b>1000483</b>	
				SCALE <b>NONE</b>	
				WEIGHT	
				SHEET <b>1 OF 1</b>	

NEXT ASSY	USED ON	APPLICATION

