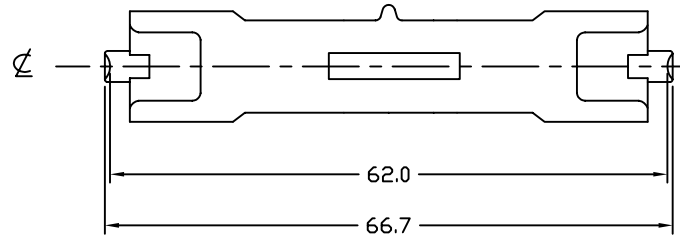
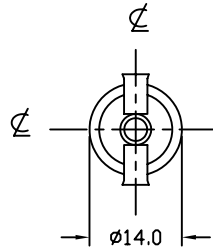


REVISIONS			
REV	DESCRIPTION	DATE	APPROVED



NOTES:

1. ALL DIMENSIONS ARE IN MM.
2. SEAL TEMP: SHOULD BE MAINTAINED BELOW 350°C
3. THE DIMENSIONS AND SPECIFICATIONS OF PRODUCT LISTED IN THIS SHEET ARE SUBJECT TO CHANGE WITHOUT NOTICE FOR IMPROVEMENT.

CHARACTERISTICS	
VOLTAGE	120 V
WATTAGE	420 W
COLOR TEMP.	3200 K
TOTAL LUMEN	11000 Lm
BASE TYPE	R7s-18
AVERAGE LIFE	75 HRS
FILAMENT TYPE	CC-8
BURN POSITION	Any

ITEM	QTY	DESCRIPTION	CODE IDENT	PART NUMBER	REMARKS
LIST OF MATERIALS					
UNLESS OTHERWISE SPECIFIED DIMENSIONS ARE IN INCHES		CONTRACT NO.		USHIO AMERICA, INC. 5440 Cerritos Avenue Cypress, CA 90630 TITLE FAL JPD120V-420WC	
DECIMALS .X ± -		APPROVALS			
.XX ± -		DATE			
.XXX ± -		DRAWN R.AMPARO 12/17/99			
ANGLES ± -		CHKD D.GILCZYNSKI 12/17/99		SIZE	
DRILLED HOLES PER AND 10387 REMOVE BURRS AND SHARP EDGES ALL DIMENSIONS AFTER PLATING		ENGR		CODE IDENT NO. FAL	
MATERIAL		MFG		DWG NO. 1000472	
COMPOSITE		QUAL		SCALE NONE	
FINISH		DSGN ACTVY		WEIGHT	
		GOVT ACTVY		SHEET 1 OF 1	

4

3

1

D

D

C

C

B

B

A

A

4

3

2

1

CAD