

MasterClass InstantFit (UL Type- A) T8

15.5T8/MAS/48-840/IF25/P/DIM 25/1

The MasterClass InstantFit T8 lamps provide hassle-free installation with simple lamp-for-lamp replacements. They deliver what we promise, with at least 40% energy savings, flicker-free performance, and the life you would expect. Other lamps claim compatibility but only MasterClass InstantFit (UL Type A) has been proven to work with over 200 ballasts and drivers, delivering even light output, with proven energy savings and a long average lifetime. End users will be delighted being under these comfortable and high quality lamps with no visible flicker and optimized optics. Energy managers will enjoy these lamps too as they can count the savings delivered by our lamps. To enjoy more energy savings, the MasterClass InstantFit lamps can be paired with the Advance TLED drivers to create a Type C system. With available 70,000 hour life, 7-year limited warranty and a shatter-prevention polycarbonate lens, Philips MasterClass InstantFit TLED lamps deliver benefits for all.

Product data

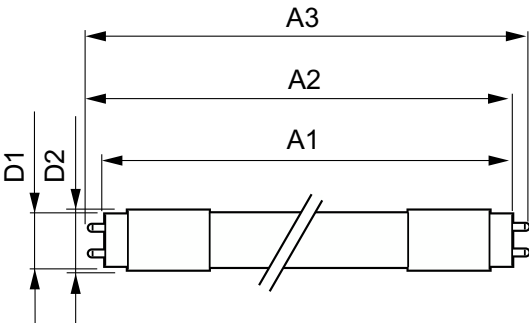
General Information			
Lighting Technology	LED	Luminous Flux	2,500 lumen
Switching Cycle	50,000	Color Designation	Cool White (CW)
Nominal lifetime	70,000 hour(s)	Correlated Color Temperature (Nom)	4000 K
Cap-Base	G13 [Medium Bi-Pin Fluorescent]	Luminous Efficacy (rated) (Nom)	161 lm/W
		Color Consistency	<6
		Color rendering index (CRI)	80
		LLMF At End Of Nominal Lifetime (Nom)	70 %
Light Technical			
Color Code	840 [CCT of 4000K]		
Beam Angle (Nom)	180 degree(s)		

MasterClass InstantFit (UL Type-A) T8

Operating and Electrical	
Line Frequency	20K to 120K Hz
Input Frequency	20K to 120K Hz
Power Consumption	15.5 W
Wattage Equivalent	32 W
Starting Time (Nom)	0.5 s
Warm-up time to 60% light	0.5 s
Power Factor (Fraction)	0.9
Voltage (Nom)	120-277,347 V
Temperature	
Ambient temperature range	-20 °C to 55 °C
T-Case Maximum (Nom)	104 °F
Controls and Dimming	
Dimmable	Only with specific dimmers
Mechanical and Housing	
Bulb Finish	Frosted
Bulb Material	Plastic

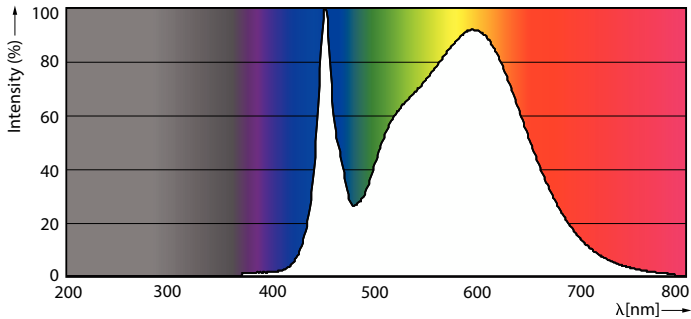
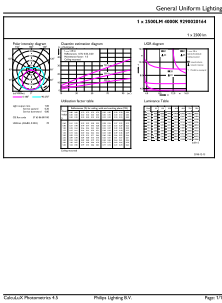
Product Length	47-1/4 inch
Bulb Shape	Tube, double-ended
Approval and Application	
Energy Saving Product	Yes
Approval Marks	RoHS compliance UL certificate DLC compliance
Energy Consumption kWh/1000 h	- kWh
EU RoHS compliant	Yes
Product Data	
Order product name	15.5T8/MAS/48-840/IF25/P/DIM 25/1
Order code	545194
Numerator - Quantity Per Pack	1
Numerator - Packs per outer box	25
Material number (12NC)	929002016404
Full product name	15.5T8/MAS/48-840/IF25/P/DIM 25/1
EAN/UPC - Case	50046677545197

Dimensional drawing



Product	D1	D2	A1	A2	A3
15.5T8/MAS/48-840/IF25/P/DIM 25/1	25.7 mm	28 mm	1,198.1 mm	1,205.2 mm	1,212.3 mm

Photometric data

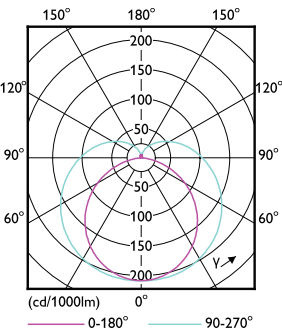


General uniform lighting - 15.5T8/MAS/48-840/IF25/P/DIM 25/1

Spectral Power Distribution Colour - 15.5T8/MAS/48-840/IF25/P/DIM 25/1

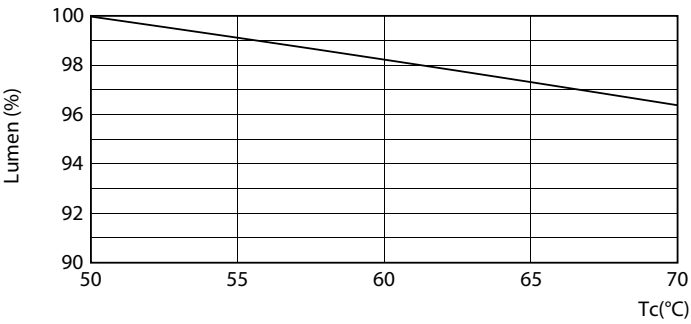
MasterClass InstantFit (UL Type-A) T8

Photometric data

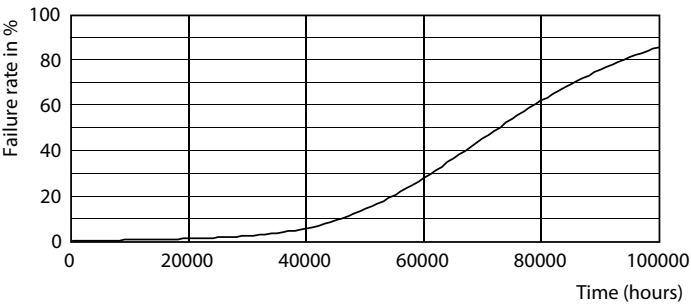


Light Distribution Diagram - 15.5T8/MAS/48-840/IF25/P/DIM 25/1

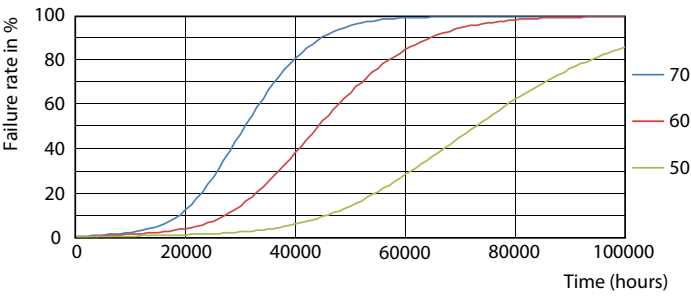
Lifetime



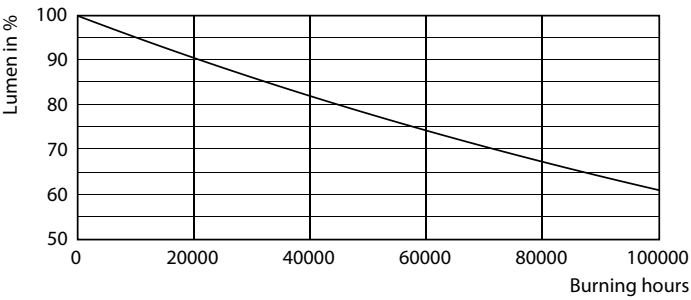
Lumen Maintenance Diagram - 15.5T8/MAS/48-840/IF25/P/DIM 25/1



Life Expectancy Diagram - 15.5T8/MAS/48-840/IF25/P/DIM 25/1



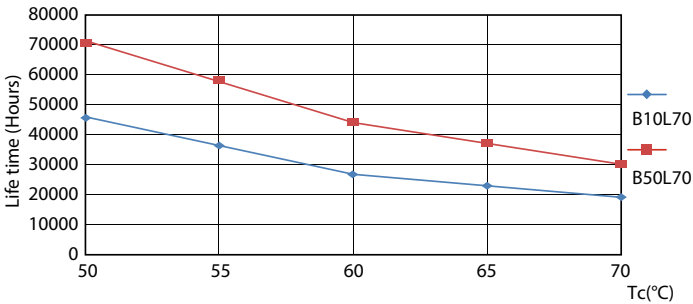
Life Expectancy Diagram - 15.5T8/MAS/48-840/IF25/P/DIM 25/1



Lumen Maintenance Diagram - 15.5T8/MAS/48-840/IF25/P/DIM 25/1

MasterClass InstantFit (UL Type-A) T8

Lifetime



Life Expectancy Diagram - 15.5T8/MAS/48-840/IF25/P/DIM 25/1

