

T8

12.5T8/COR/48-840/FF18/G/DIM 25/1

Our TLEDs are available in InstantFit (Type A / Type C) or MainsFit (Ballast bypass / Type B) versions. The InstantFit lamps work on a broad variety of ballasts and LED drivers. Only InstantFit has over 15,000 lamp & ballast combinations delivering even light output, energy savings and a long lifetime. Our MainsFit products feature a double-ended design, simplifying installation while a proprietary safety circuit minimizes a shock risk. Lamp sizes range from 2-foot to 8-foot and U-bend with a variety of lumen outputs.

Product data

| General information | | Power (Nom) | |
|---------------------------------------|----------------------------------|---------------------------------|--|
| Cap-Base | G13 [Medium Bi-Pin Fluorescent] | | 12.5 13 W |
| EU RoHS compliant | Yes | Lamp Current (Max) | 110 mA |
| Nominal Lifetime (Nom) | 50000 h | Lamp Current (Min) | 45 mA |
| Switching Cycle | 50000X | Starting Time (Nom) | 0.5 s |
| Technical Type | 12.5;13-32W | Warm Up Time to 60% Light (Nom) | 0.5 s |
| Light technical | | UL Type | Type A+B - works with or without a ballast |
| Color Code | 840 [CCT of 4000K] | Power Factor (Nom) | 0.9 |
| Beam Angle (Nom) | 240 ° | Voltage (Nom) | 120-277 V |
| Luminous Flux (Nom) | 1800 lm | Temperature | |
| Color Designation | Cool White (CW) | T-Ambient (Max) | 45 °C |
| Correlated Color Temperature (Nom) | 4000 K | T-Ambient (Min) | -20 °C |
| Luminous Efficacy (rated) (Nom) | 144.00 lm/W | T-Storage (Max) | 65 °C |
| Color Consistency | <6 | T-Storage (Min) | -40 °C |
| Color Rendering Index (Nom) | 82 | T-Case Maximum (Nom) | 60 °C |
| LLMF At End Of Nominal Lifetime (Nom) | 70 % | Controls and dimming | |
| Operating and electrical | | Dimmable | No |
| Input Frequency | 50 to 60 Hz | | |

T8

Mechanical and housing

| | |
|----------------|--------------------|
| Bulb Finish | Frosted |
| Bulb Material | Glass |
| Product Length | 1200 mm |
| Bulb Shape | Tube, double-ended |

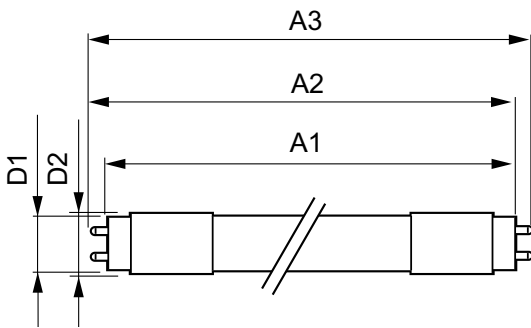
Approval and application

| | |
|-----------------------|---|
| Energy Saving Product | Yes |
| Approval Marks | RoHS compliance UL certificate DLC compliance |

Product data

| | |
|---------------------------------|-----------------------------------|
| Order product name | 12.5T8/COR/48-840/FF18/G/DIM 25/1 |
| EAN/UPC - Product | 046677600181 |
| Order code | 929002317304 |
| Numerator - Quantity Per Pack | 1 |
| Numerator - Packs per outer box | 25 |
| Material Nr. (12NC) | 929002317304 |
| Net Weight (Piece) | 0.180 kg |

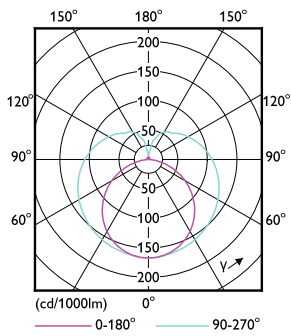
Dimensional drawing



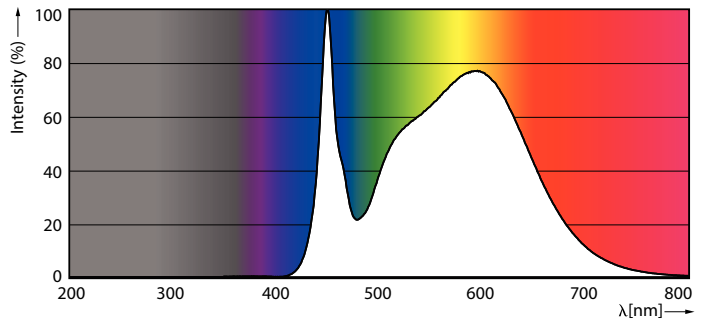
12.5T8/COR/48-840/FF18/G/DIM 25/1

| Product | D1 | D2 | A1 | A2 | A3 |
|-----------------------------------|---------|-------|-----------|-----------|-----------|
| 12.5T8/COR/48-840/FF18/G/DIM 25/1 | 25.7 mm | 28 mm | 1198.2 mm | 1205.3 mm | 1212.4 mm |

Photometric data

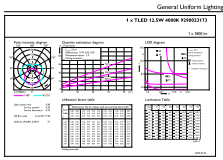


LEDtube COR 12,5W G13



LEDtube COR 12,5W G13 1800lm 840

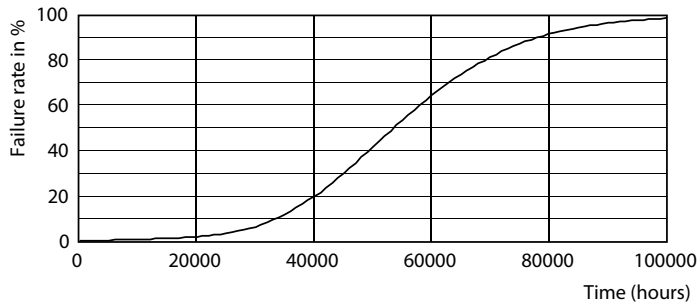
Photometric data



© 2021 Philips Lighting B.V. Page 10 of 11

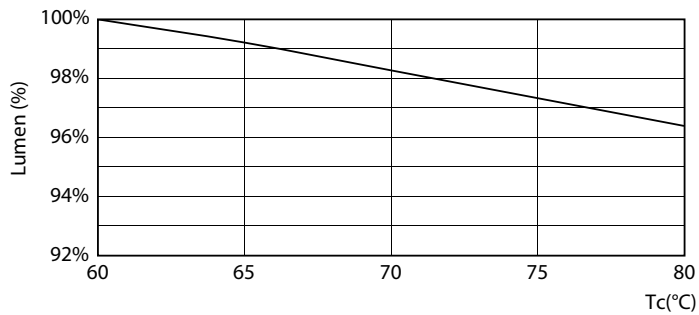
LEDtube COR 12,5W G13 1800lm 840

Lifetime



LEDtube 50K-LED

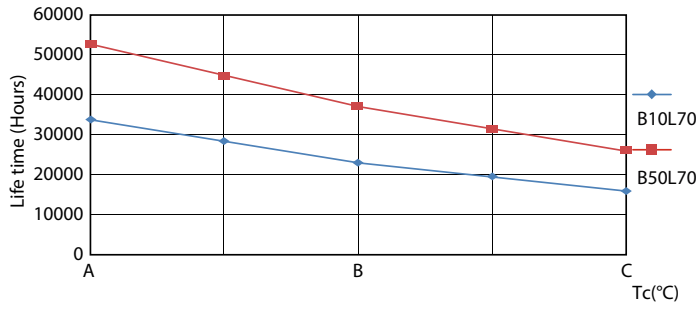
LEDtube 50K FailureRate-LED



LEDtube 12,5W 50K 1 LumenVsTc

LEDtube 50K-LMP

Lifetime



LEDtube 50K LifetimeVsTc-LED

