



PL-C/T

11PL-C/T/COR/32V-3CCT/MF15/P/20/1

Philips PLED 4-pin & 2-pin lamps are an affordable LED solution to replace compact fluorescent lamps. The product provides a natural lighting effect for use in many lighting applications, and provides instant energy savings, making them an environmentally-friendly solution. Available as replacements for 13W, 26W and 32W compact fluorescent lamps.

Product data

General Information		Lamp Current (Min)	
Cap-Base	G24q		39 mA
Nominal lifetime	30,000 hour(s)	Wattage Equivalent	32 W
Switching Cycle	50,000	Starting Time (Nom)	0.5 s
Lighting Technology	LED	Warm-up time to 60% light	0.5 s
		Power Factor (Fraction)	0.9
		Voltage (Nom)	120-277 V
		UL Type	UL Type B
Light Technical		Temperature	
Color Code	3000/3500/4000	T-Case Maximum (Nom)	75 °C
Beam Angle (Nom)	120 degree(s)		
Luminous Flux	1,425 1,450 1,500 lm	Controls and Dimming	
Color Designation	3000/3500/4000	Dimmable	No
Correlated Color Temperature (Nom)	Selectable 3000 3500 4000 K		
Luminous Efficacy (rated) (Nom)	136.00 lm/W	Mechanical and Housing	
Color Consistency	<6	Bulb Finish	Frosted
Color rendering index (CRI)	83	Bulb Material	Plastic
LLMF At End Of Nominal Lifetime (Nom)	70 %	Product Length	104 mm
		Bulb Shape	PL-C;PL-T
		Net Weight (Piece)	0.105 kg
Operating and Electrical			
Line Frequency	50 to 60 Hz		
Input Frequency	50 to 60 Hz		
Power Consumption	11 W		
Lamp Current (Max)	98 mA		

PL-C/T

Approval and Application

Energy Saving Product	Yes
Approval Marks	RoHS compliance UL certificate
EU RoHS compliant	Yes
Ambient temperature range	-20 to +45 °C

Application Conditions

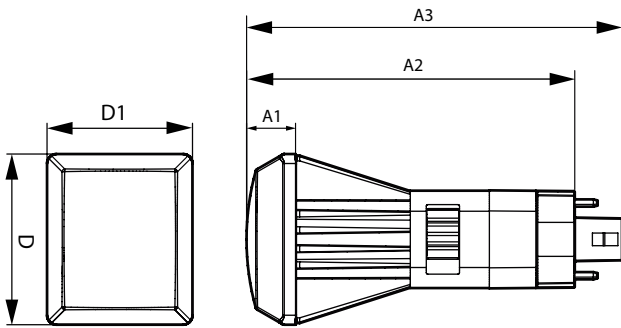
can it be used in closed luminaires	Yes
-------------------------------------	-----

Product Data

Order product name	11PL-C/T/COR/32V-3CCT/MF15/P/20/1
--------------------	-----------------------------------

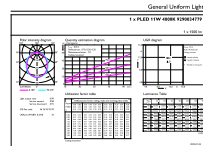
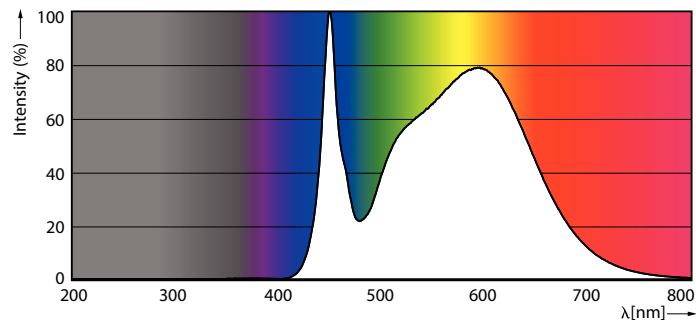
Full product name	11PL-C/T/COR/32V-3CCT/MF15/P/20/1
Order code	929003477904
Material Nr. (12NC)	929003477904
Numerator - Quantity Per Pack	1
EAN/UPC - Product/Case	046677577926
Numerator - Packs per outer box	20
EAN/UPC - Case	50046677577921

Dimensional drawing



Product	D1	D	A1	A2	A3
11PL-C/T/COR/32V-3CCT/MF15/P/20/1	46 mm	54 mm	16 mm	104 mm	119 mm

Photometric data

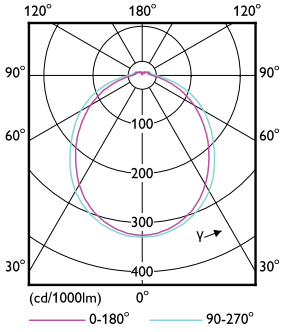


General Uniform Lighting - 11PL-C/T/COR/32V-3CCT/MF15/P/20/1

Spectral Power Distribution Colour - 11PL-C/T/COR/32V-3CCT/MF15/P/20/1

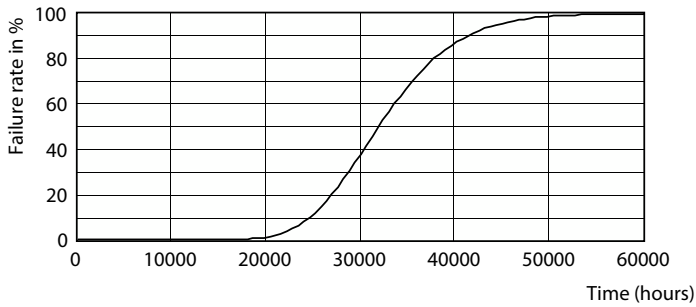
General uniform lighting - 11PL-C/T/COR/32V-3CCT/MF15/P/20/1

Photometric data

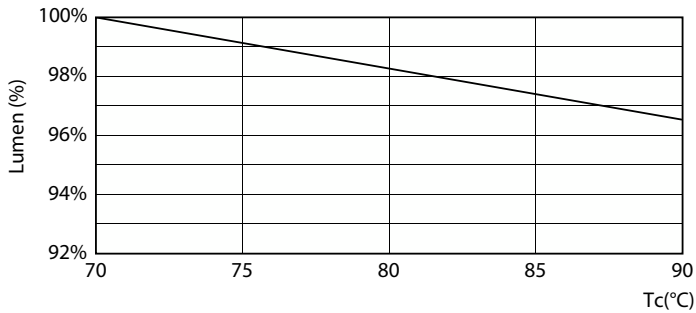


Light Distribution Diagram - 11PL-C/T/COR/32V-3CCT/MF15/P/20/1

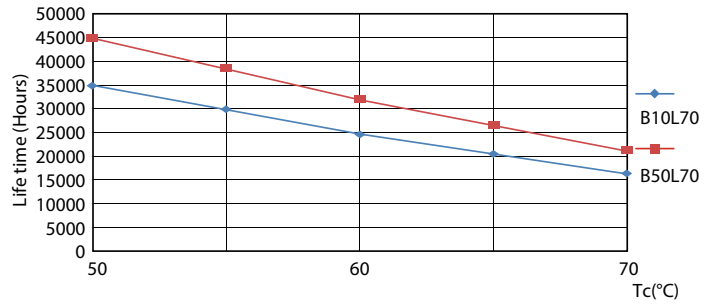
Lifetime



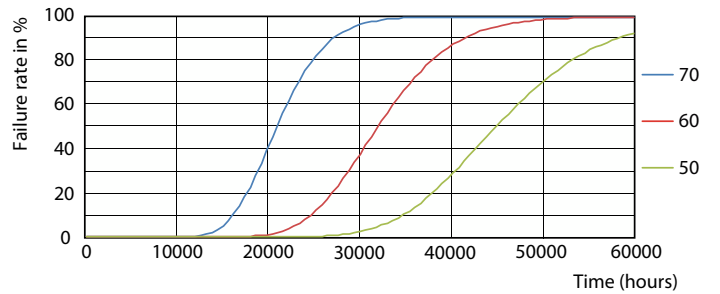
Life Expectancy Diagram



Lumen Maintenance Diagram - 11PL-C/T/COR/32V-3CCT/MF15/P/20/1



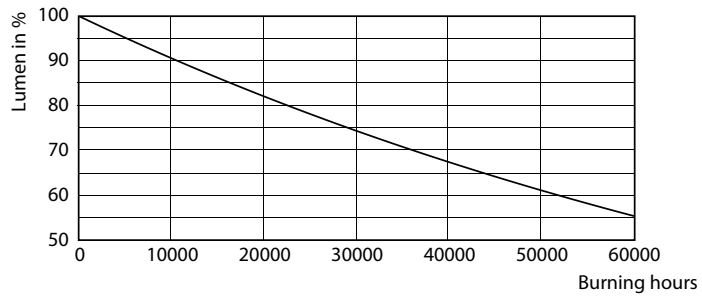
LifetimeVsTc



FailureRate

PL-C/T

Lifetime



Lumen Maintenance Diagram - 11PL-C/T/COR/32V-3CCT/MF15/P/20/1

