



# FlexFit (Hybrid UL Type A + B) T8

## 10.5T8/COR/36-5CCT/FF15/G/DIM 25/1

Philips FlexFit (Hybrid UL Type A + B) lamps are designed with the customer in mind for installation flexibility. The FlexFit lamp can operate as both a plug and play (UL Type-A) and double-ended direct wire (UL Type-B). As with all Philips products, the FlexFit family of lamps are compatible with more ballasts than any manufacturer giving the customer peace of mind during installation. Additionally, the long life (50K hours) delivers reduced maintenance and replacement costs. If the ballast should fail, simply cut the ballast from the system and wire the tube directly to line voltage (120-277V)!

### Product data

General Information		Operating and Electrical	
Cap-Base	G13	Input Frequency	50 to 60 Hz
Nominal lifetime	50,000 hour(s)	Power Consumption	10.5
Switching Cycle	50,000	Lamp Current (Max)	108 mA
Lighting Technology	LED	Lamp Current (Min)	48 mA
<b>Light Technical</b>		Wattage Equivalent	25 W
Color Code	3000K/3500K/4000K/5000K/6500K	Starting Time (Nom)	0.5 s
Beam Angle (Nom)	220 degree(s)	Warm-up time to 60% light	0.5 s
Luminous Flux	1,400 1,400 1,500 1,500 1,500 lm	Power Factor (Fraction)	0.9
Color Designation	3000K/3500K/4000K/5000K/6500K	Voltage (Nom)	120-277 V
Correlated Color Temperature (Nom)	3000 3500 4000 5000 6500 K	UL Type	UL Type A+B
Luminous Efficacy (rated) (Nom)	136 lm/W	<b>Temperature</b>	
Color Consistency	<6	T-Case Maximum (Nom)	131 °F
Color rendering index (CRI)	80		
LLMF At End Of Nominal Lifetime (Nom)	70 %		

# FlexFit (Hybrid UL Type A + B) T8

## Controls and Dimming

Dimmable	Only with specific dimmers
----------	----------------------------

## Mechanical and Housing

Bulb Finish	Frosted
Bulb Material	Plastic
Product Length	35-7/16 inch
Bulb Shape	T8
Net Weight (Piece)	0.392 lb

## Approval and Application

Energy Saving Product	Yes
Approval Marks	RoHS compliance UL certificate DLC compliance
EU RoHS compliant	Yes
Ambient temperature range	-4 to +113 °F

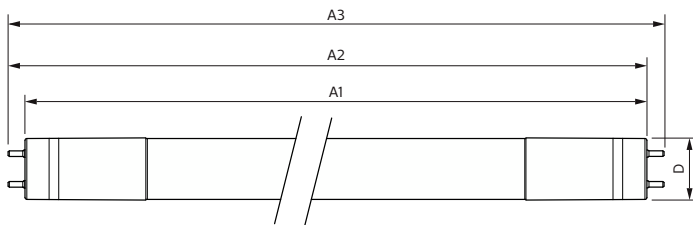
## Application Conditions

can it be used in closed luminaires	Yes
-------------------------------------	-----

## Product Data

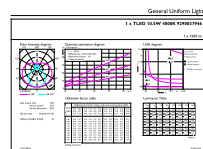
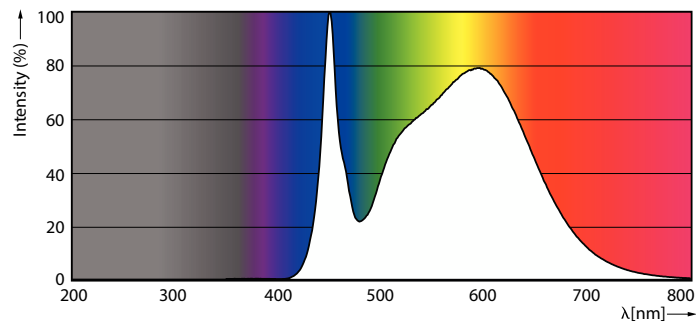
Order product name	10.5T8/COR/36-5CCT/FF15/G/DIM 25/1
Full product name	10.5T8/COR/36-5CCT/FF15/G/DIM 25/1
Order code	588632
Material Nr. (12NC)	929003794604
Numerator - Quantity Per Pack	1
EAN/UPC - Product/Case	046677588632
Numerator - Packs per outer box	25
EAN/UPC - Case	50046677588637

## Dimensional drawing



Product	D1	D2	A1	A2	A3
10.5T8/COR/36-5CCT/FF15/G/DIM 25/1	1-1/16 inch	1-1/8 inch	35-3/16 inch	35-1/2 inch	35-3/4 inch

## Photometric data

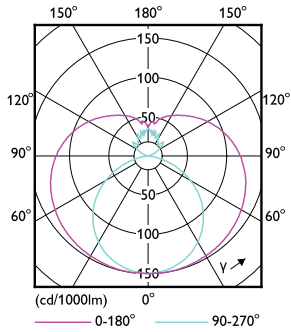


Spectral Power Distribution Colour - 10.5T8/COR/36-5CCT/FF15/G/DIM 25/1

General uniform lighting - 10.5T8/COR/36-5CCT/FF15/G/DIM 25/1

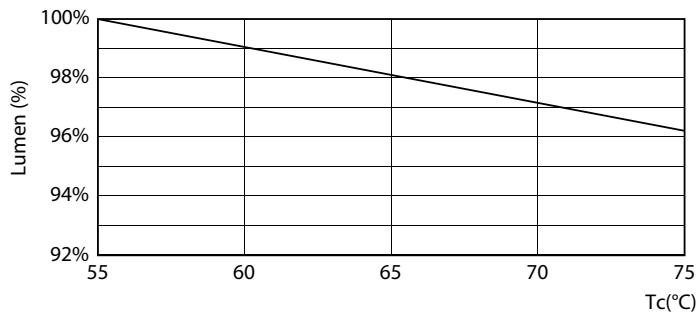
# FlexFit (Hybrid UL Type A + B) T8

## Photometric data

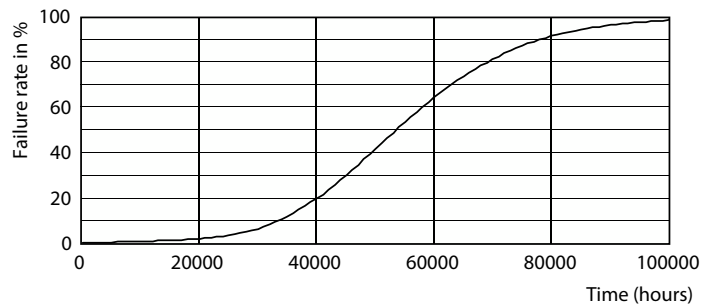


Light Distribution Diagram - 10.5T8/COR/36-5CCT/FF15/G/DIM 25/1

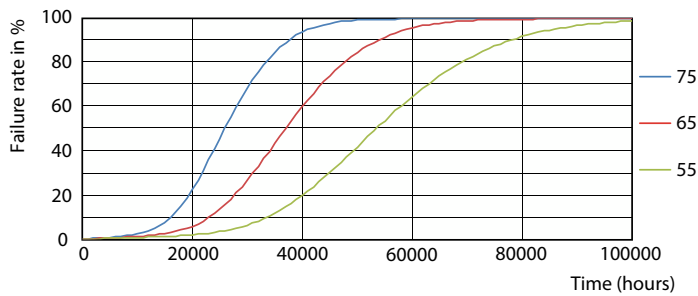
## Lifetime



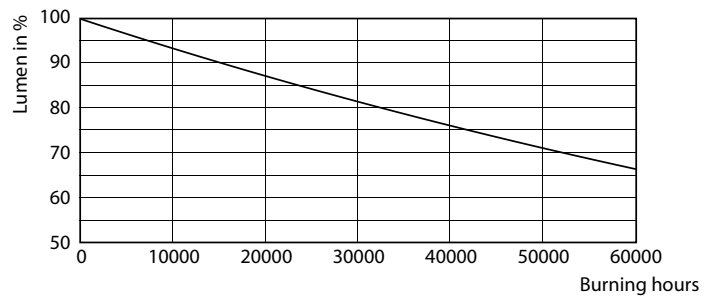
Lumen Maintenance Diagram - 10.5T8/COR/36-5CCT/FF15/G/DIM 25/1



Life Expectancy Diagram



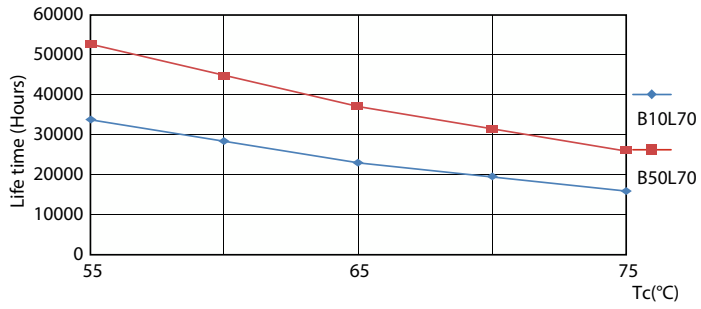
FailureRate



Lumen Maintenance Diagram - 10.5T8/COR/36-5CCT/FF15/G/DIM 25/1

## FlexFit (Hybrid UL Type A + B) T8

### Lifetime



LifetimeVsTc

